



WINI  MEIN BÜRO.

Stoffe + textile Oberflächen
Fabrics + Textile surfaces

03/2024

Inhalt *Contents*

Lucia CS	Seite 3
Carlow	Seite 6
Atlantic Screen	Seite 11
Mica	Seite 14
Synergy 170.....	Seite 18
Blazer Lite	Seite 22
Quest	Seite 27
RePlay	Seite 31
Remix Screen	Seite 36
Polyestervlies	Seite 39



Lucia CS 100% Polyester

PG01

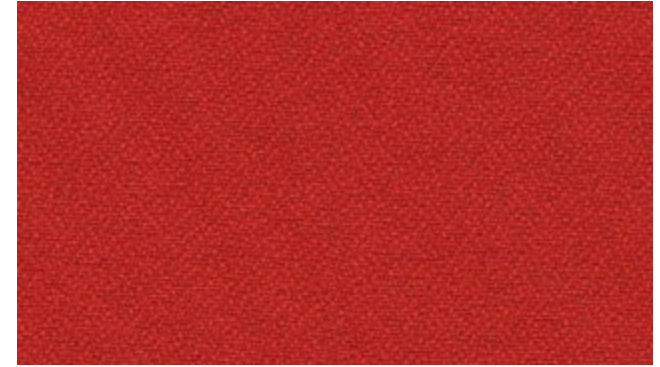
WINI MEIN BÜRO.



Havana LC 009



Costa LC 026



Panama LC 079



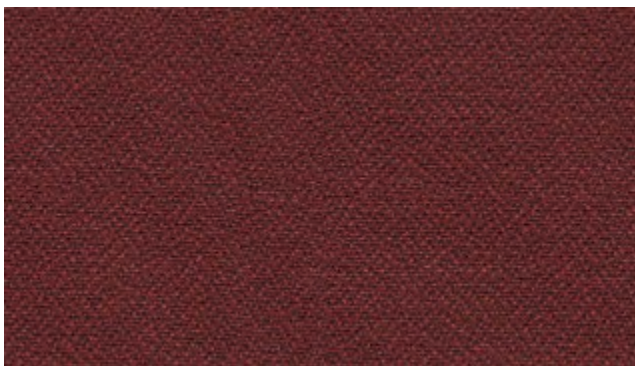
Blizzard LC 081



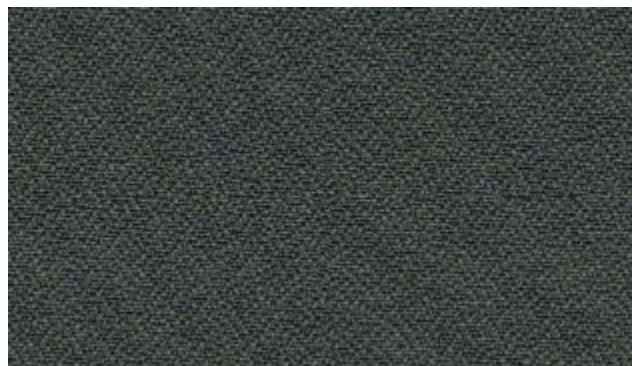
Slip LC 094



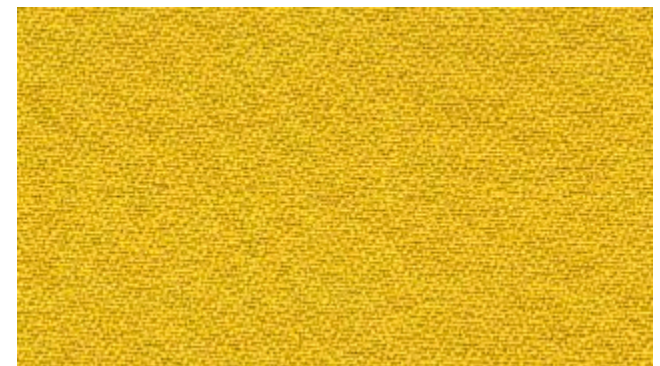
Rum LC 173



Negril LC 175



Revive LC 182



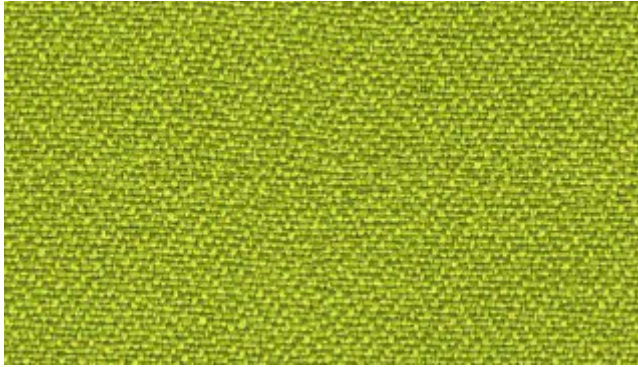
Kota LC 415



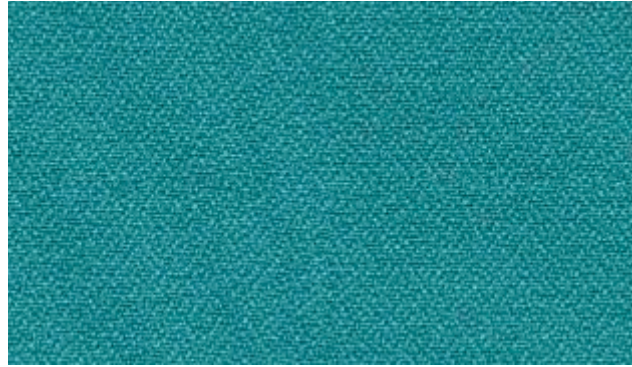
Lucia CS 100% Polyester

PG01

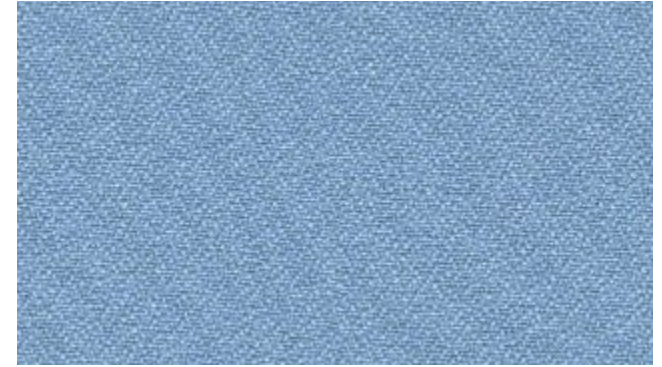
WINI MEIN BÜRO.



Tenom LC 419



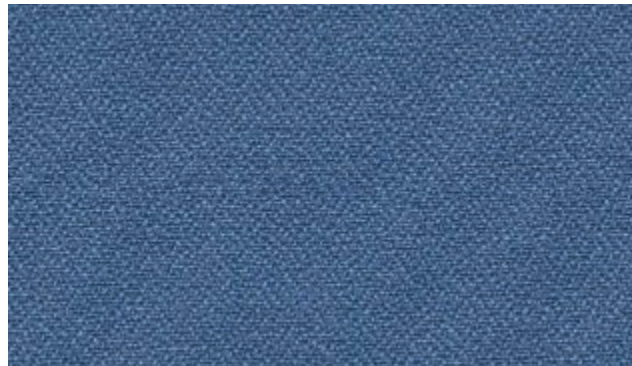
Depok LC 421



Medan LC 422



Makili LC 424



Roques LC 433



Varadero LC 434



Lucia CS

Technische Informationen

Zusammensetzung

100% Trevira CS® schwerentflammbare Polyester
Gewicht: 265g/m² ±5%

Feuersicherung

BS EN 1021-1:2014 (Zigarettestest) BS EN 1021-2:2014 (Streichholztest)
BS 7176:2007 Low Hazard BS 476 Part 7 Class 1 BS 476 Part 6 Class 0 DIN
4102 B1 NF-P-92-507 M1 UNI 8456 + UNI 9174 Classe 1 BS EN13501-1
Adhered class B, s1, d0 BS EN 13501-1 Un-adhered class B, s1, d0 BS 5867:
Part 2: 2008 ECE Regulation NO.118

Bemerkung

Schwerentflammbarkeit hängt von den verwendeten Komponenten ab.

Lichtechtheit

6 (ISO 105 – B02:2014)

Reibechtheit

Nass: 4, Trocken: 4 (ISO 105 – X 12:2002)

Reinigung

Regelmäßig staubsaugen. Dazu mit einem feuchten Tuch abwischen
oder mit einem speziellen Polsterschaum behandeln.

Verfügbar für

- WINEA SONIC ● WINEA ELEMENTS
- WINEA SINUS ● MAXX STAURAUM Sitzkissen
- WINEA X ● WINEA PLUS
- WINEA TOOLZ

● erhältlich ● nicht erhältlich

Technical Information

Composition

100% Trevira CS® Flame Retardant Polyester
Weight: 265g/m² ±5%

Flammability

BS EN 1021-1:2014 (Zigarettestest) BS EN 1021-2:2014 (Streichholztest)
BS 7176:2007 Low Hazard BS 476 Part 7 Class 1 BS 476 Part 6 Class 0 DIN
4102 B1 NF-P-92-507 M1 UNI 8456 + UNI 9174 Classe 1 BS EN13501-1
Adhered class B, s1, d0 BS EN 13501-1 Un-adhered class B, s1, d0 BS 5867:
Part 2: 2008 ECE Regulation NO.118

Note

Flammability performance is dependent on components used.

Light Fastness

6 (ISO 105 – B02:2014)

Fastness to Rubbing

Wet: 4, Dry: 4 (ISO 105 – X12:2002)

Cleaning

Vacuum regularly. Wipe with a damp cloth using a proprietary
upholstery shampoo/soap.

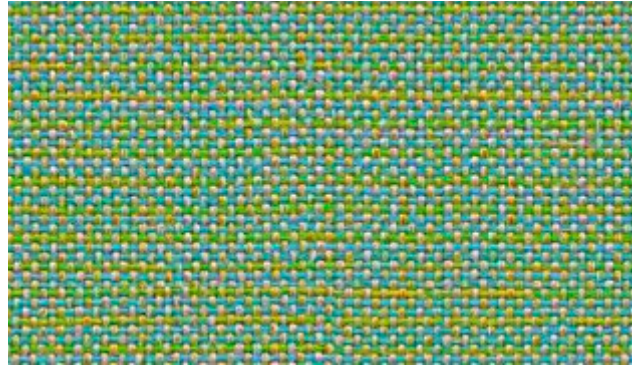
Available for

- WINEA SONIC ● WINEA ELEMENTS
- WINEA SINUS ● MAXX STAURAUM cushion
- WINEA X ● WINEA PLUS
- WINEA TOOLZ

● available ● not available



Ardee CLW10



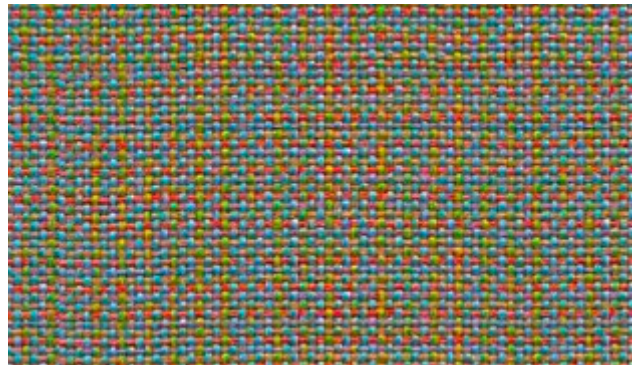
Ardmore CLW19



Avoca CLW22



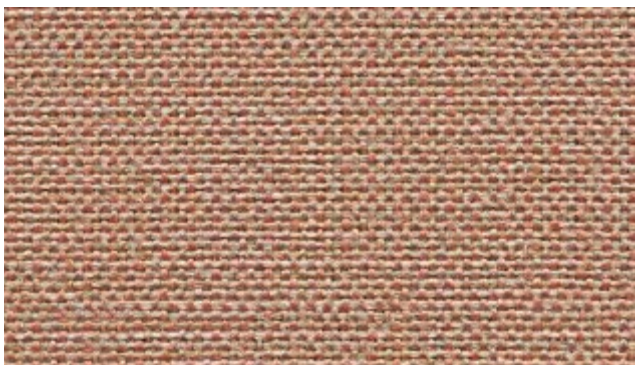
Ballina CLW02



Baloo CLW17



Bree CLW14



Callan CLW05



Carrick CLW18



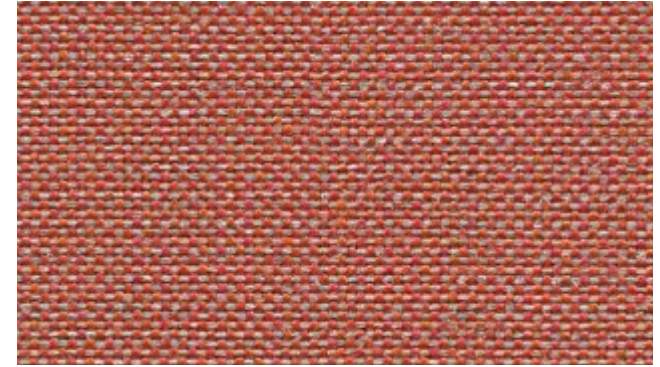
Cavan CLW15



Clifden CLW25



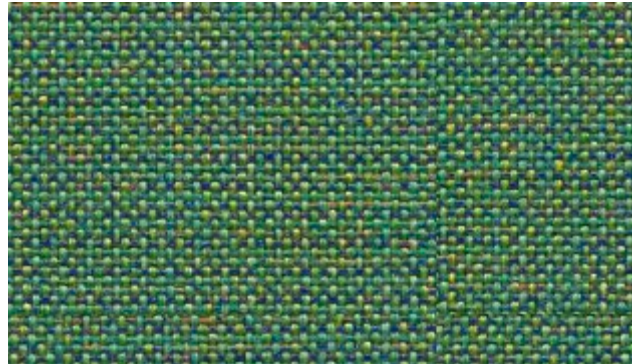
Convoy CLW09



Dublin CLW07



Emly CLW21



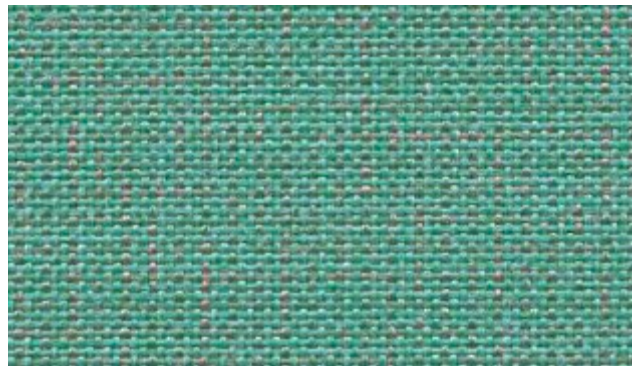
Ennis CLW20



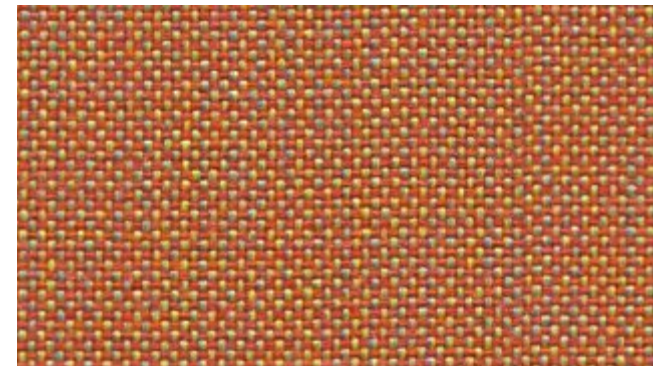
Glenamoy CLW24



Malin CLW12



Mayo CLW16



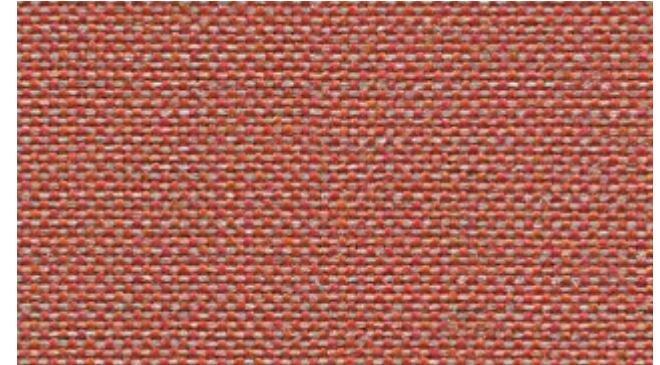
Navan CLW06



Clifden CLW25



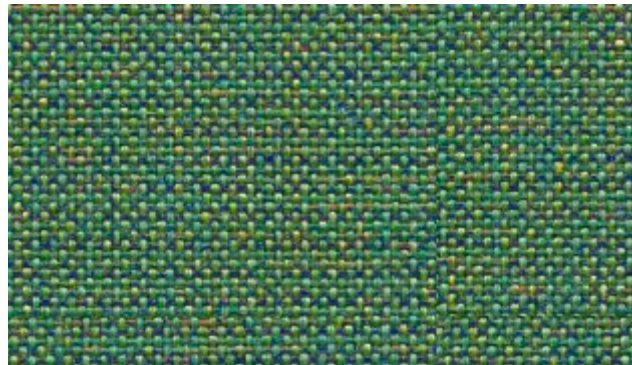
Convoy CLW09



Dublin CLW07



Emly CLW21



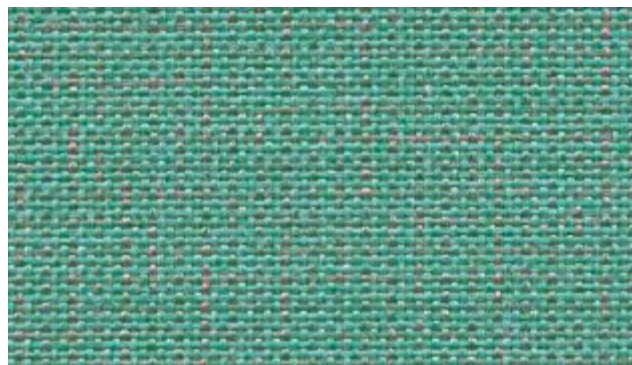
Ennis CLW20



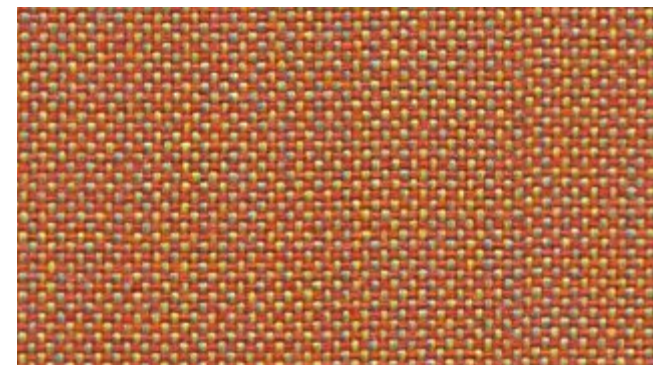
Glenamoy CLW24



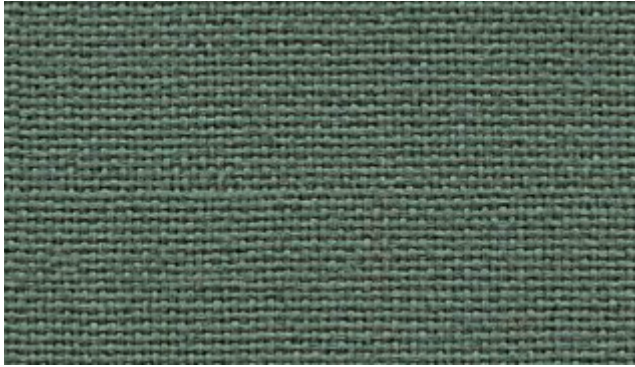
Malin CLW12



Mayo CLW16



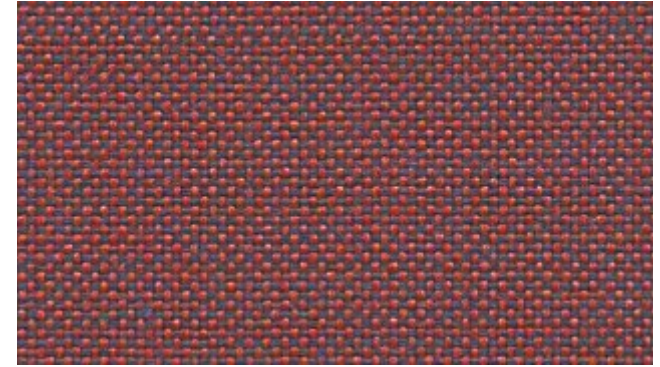
Navan CLW06



Parteen CLW23



Quin CLW04



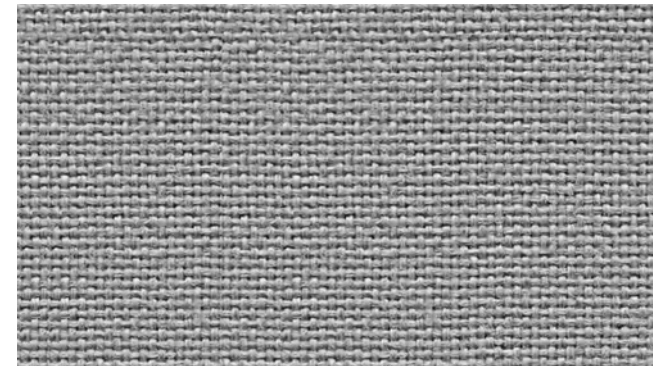
Redcross CLW08



Roundwood CLW03



Sligo CLW13



Tallow CLW01



Wicklow CLW11



Carlow

Technische Informationen

Zusammensetzung

100% Polypropylen
Gewicht: 214g/m² ±5%

Feuersicherung

EN 1021-1 (Zigarettestest) EN 13501-1 Adhered Class B, s1, d0
EN 13501-1 Un-adhered Class C, s1, d2

Bemerkung

Schwerentflammbarkeit hängt von den verwendeten Komponenten ab.

Lichtechtheit

6 (ISO 105 - B02)








Reibechtheit

Nass: 4, Trocken: 4 (ISO 105 - X 12)

Reinigung

Regelmäßig staubsaugen. Dazu mit einem feuchten Tuch abwischen oder mit einem speziellen Polsterschaum behandeln.

Verfügbar für

-  WINEA SONIC
-  WINEA SINUS
-  WINEA X
-  WINEA TOOLZ
-  WINEA ELEMENTS
-  MAXX STAURAUM Sitzkissen
-  WINEA PLUS

 erhältlich  nicht erhältlich

Technical Information

Composition

100% Polypropylen
Weight: 214g/m² ±5%

Flammability

EN 1021-1 (cigarette) EN 13501-1 Adhered Class B, s1, d0
EN 13501-1 Un-adhered Class C, s1, d2

Note

Flammability performance is dependent on components used.

Light Fastness

6 (ISO 105 - B02)

Fastness to Rubbing

Wet: 4, Dry: 4 (ISO 105 - X12)

Cleaning

Vacuum regularly. Wipe with a damp cloth using a proprietary upholstery shampoo/soap.

Available for

-  WINEA SONIC
-  WINEA SINUS
-  WINEA X
-  WINEA TOOLZ
-  WINEA ELEMENTS
-  MAXX STAURAUM cushion
-  WINEA PLUS

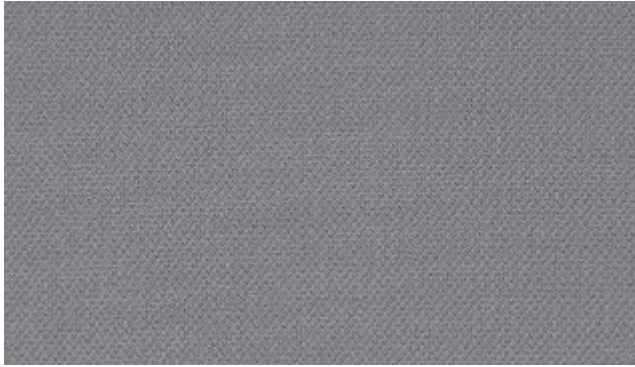
 available  not available



Atlantic Screen 100% Polyester

PG01

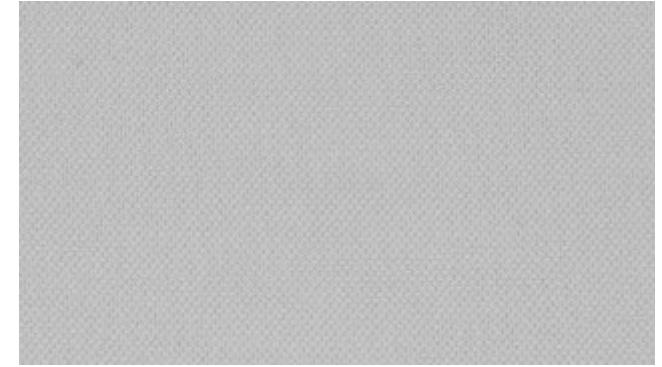
WINI  **MEIN BÜRO.**



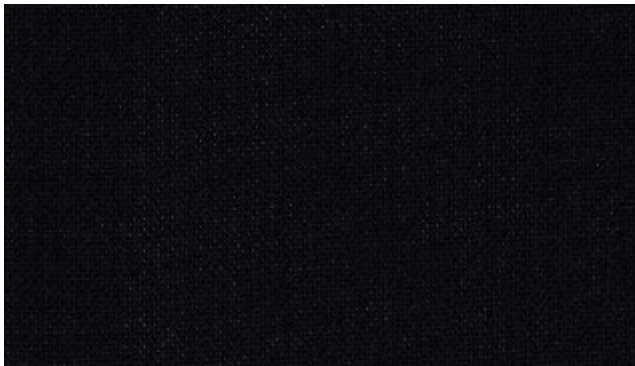
ASC60011



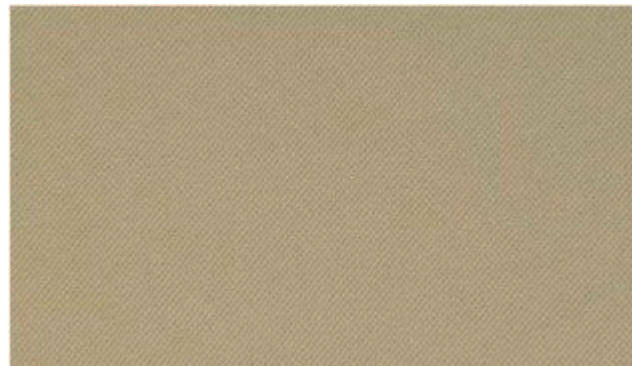
ASC60025



ASC60095



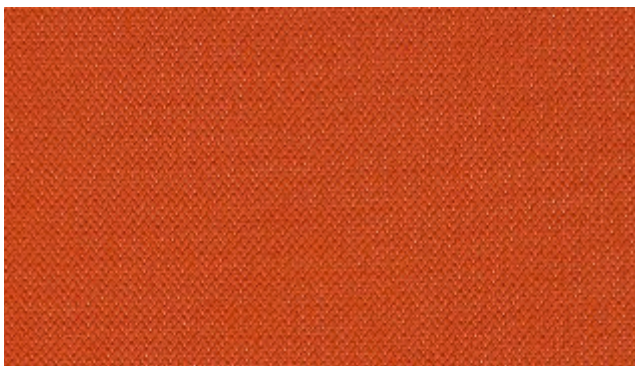
ASC60999



ASC61078



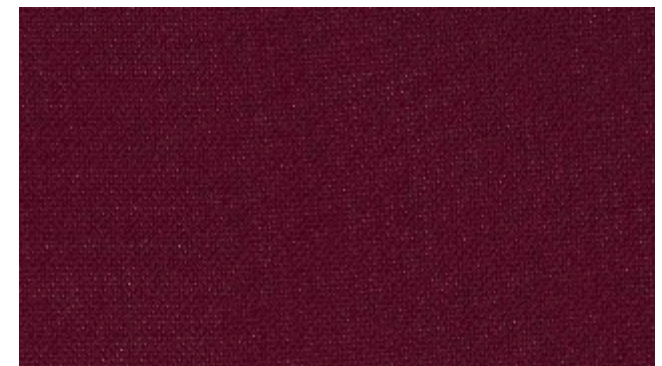
ASC63033



ASC63034



ASC64089



ASC64094



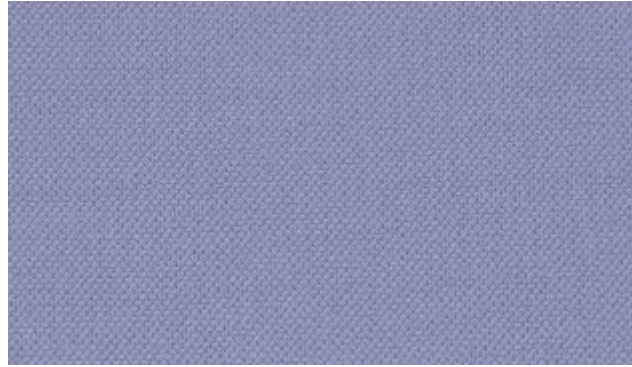
Atlantic Screen 100% Polyester

PG01

WINI  **MEIN BÜRO.**



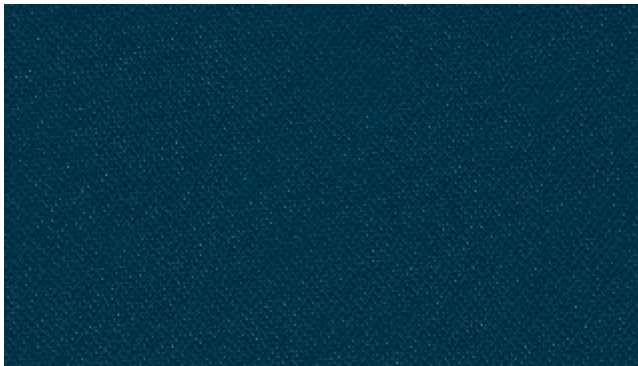
ASC65037



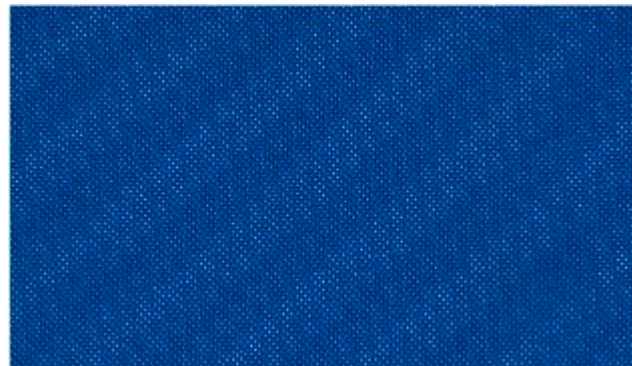
ASC65050



ASC66015



ASC66057



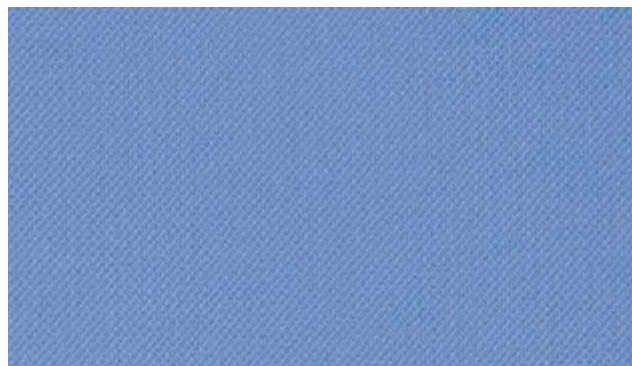
ASC66062



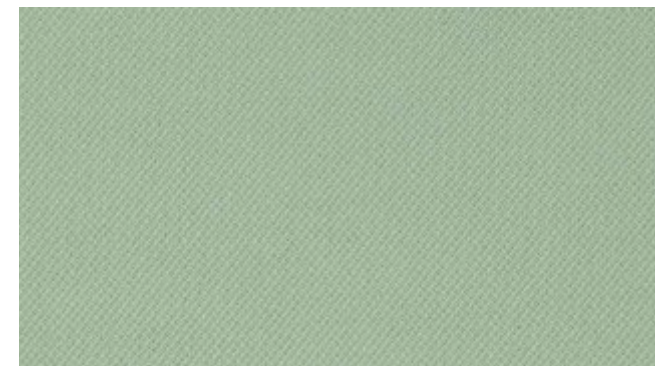
ASC66063



ASC66094



ASC66095



ASC67015



ASC68050

Technische Informationen

Zusammensetzung

100% Polyester
Gewicht: 440 g/lm {14,19 oz/lin.yd.}

Feuersicherung

ASTM E 84 Class 1 BS 476 Part 7 class 1 BS EN 1021 1&2 Cigarette and Match CA TB 117-2013

Bemerkung

Es werden auch weitere Entflammbarkeitsnormen erfüllt. Die flammhemmende Wirkung hängt vom verwendeten Schaumstoff ab. Enthält keine flammhemmenden Chemikalien.

Lichtehtheit

5-7 (ISO 105 - B02)

Reibehtheit

Nass: 4-5, Trocken: 4-5 (ISO 105 - X 12)

Reinigung

Mit Wasser abwischen.

Technical Information

Composition

100% polyester
Weight: 440 g/lm {14,19 oz/lin.yd.}

Flammability

ASTM E 84 Class 1 BS 476 Part 7 class 1 BS EN 1021 1&2 Cigarette and Match CA TB 117-2013

Note

Will also pass other flammability standards. Flame retardant performance is dependent upon the foam used. Contains no flame retardant chemicals.

Light Fastness

5-7 (ISO 105 - B02)

Fastness to Rubbing

Wet: 4-5, Dry: 4-5 (ISO 105 - X 12)

Cleaning

Wipe with a damp cloth

Verfügbar für

- WINEA SONIC
- WINEA SINUS
- WINEA X
- WINEA TOOLZ

Available for

- WINEA ELEMENTS
- MAXX STAURAUM
Sitzkissen
- WINEA PLUS

- WINEA SONIC
- WINEA SINUS
- WINEA X
- WINEA TOOLZ

- WINEA ELEMENTS
- MAXX STAURAUM
cushion
- WINEA PLUS

● erhältlich ● nicht erhältlich

● available ● not available



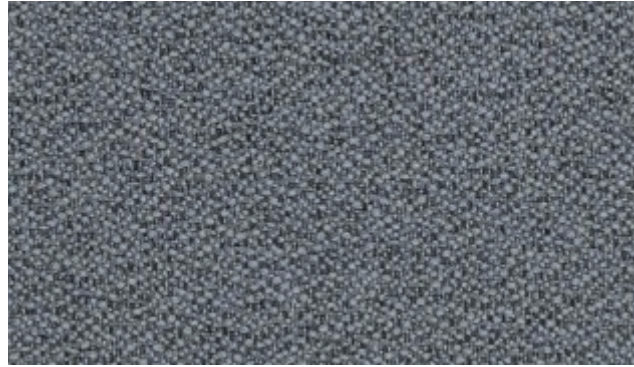
Mica 100% Polyester

PG01

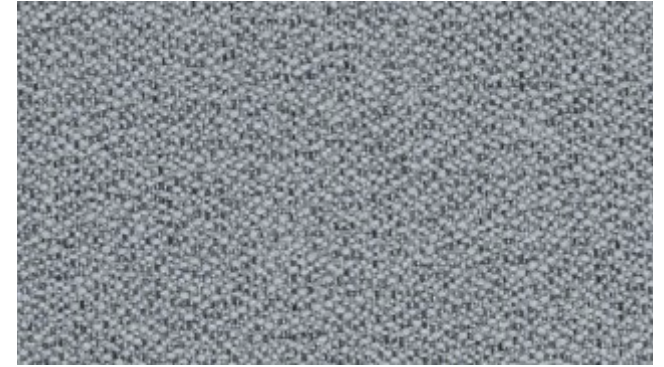
WINI  MEIN BÜRO.



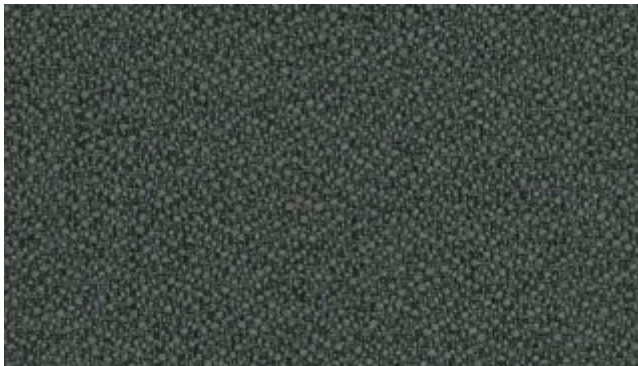
MI17001



MI17002



MI17003



MI17004



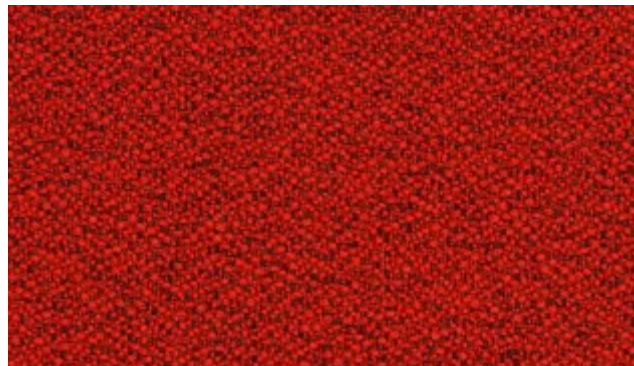
MI17005



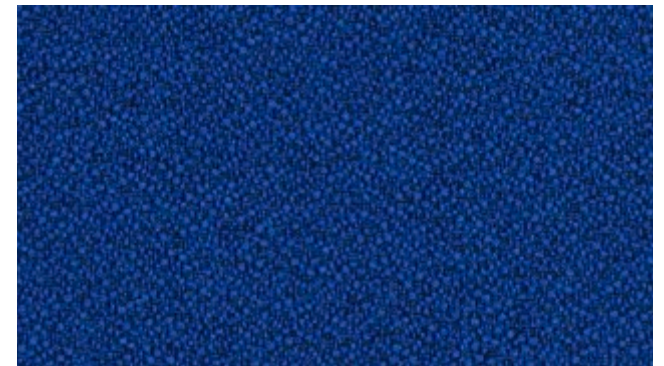
MI17006



MI17007



MI17008



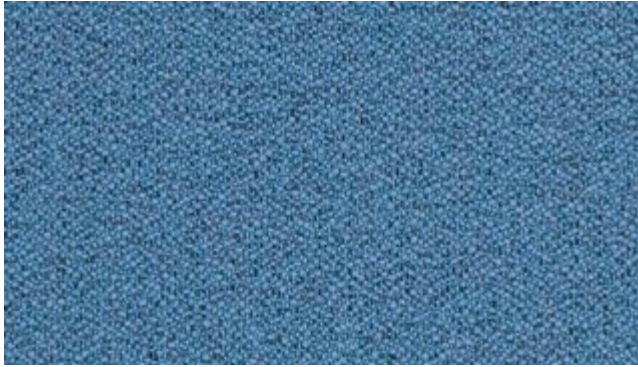
MI17009



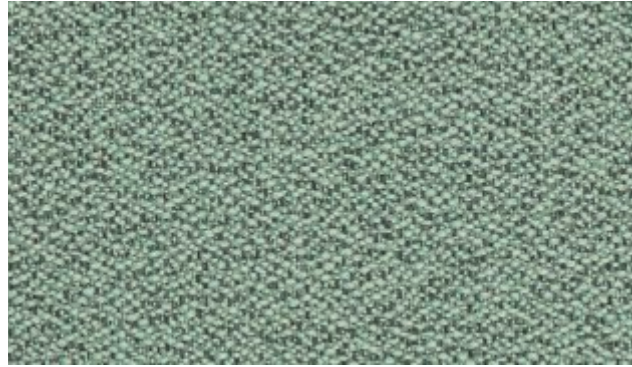
Mica 100% Polyester

PG01

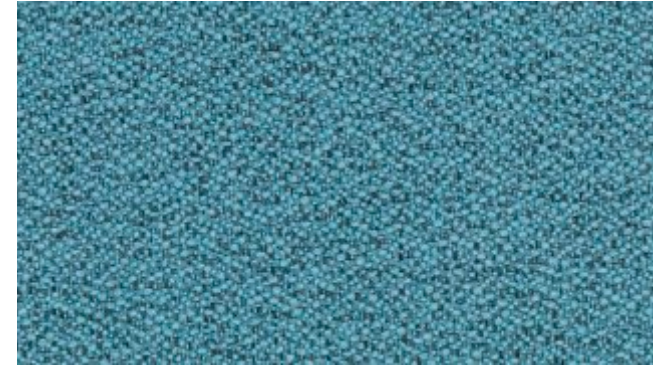
WINI  MEIN BÜRO.



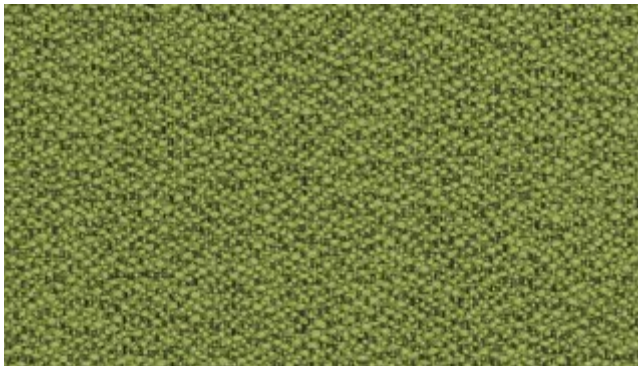
MI17010



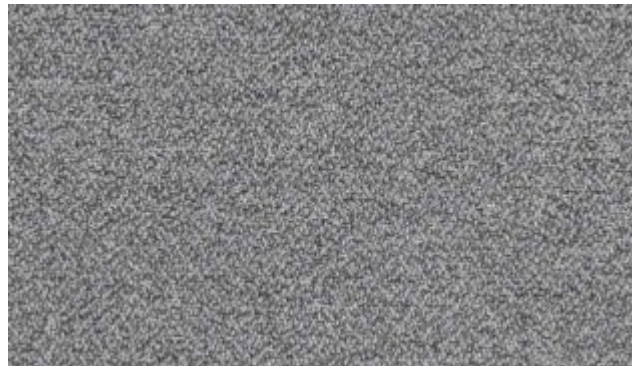
MI17011



MI17012



MI17013



MI17014



MI17015



MI17016



MI17017



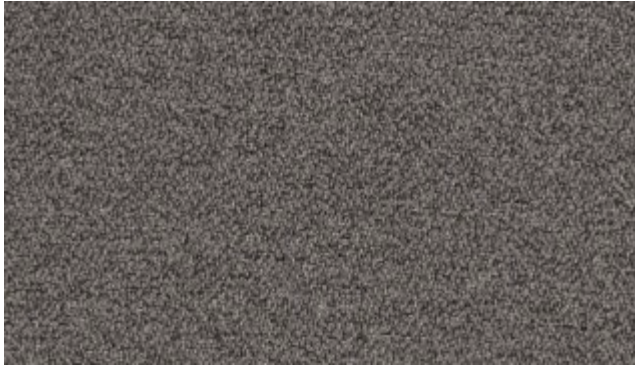
MI17018



Mica 100% Polyester

PG01

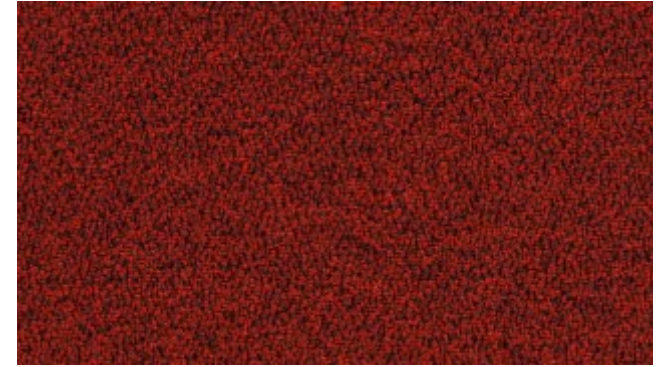
WINI MEIN BÜRO.



MI17019



MI17020



MI17021



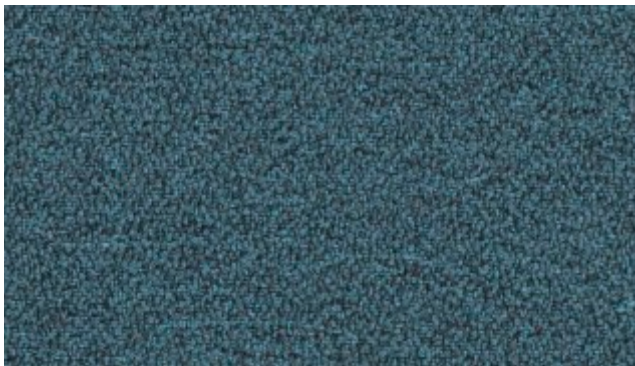
MI17022



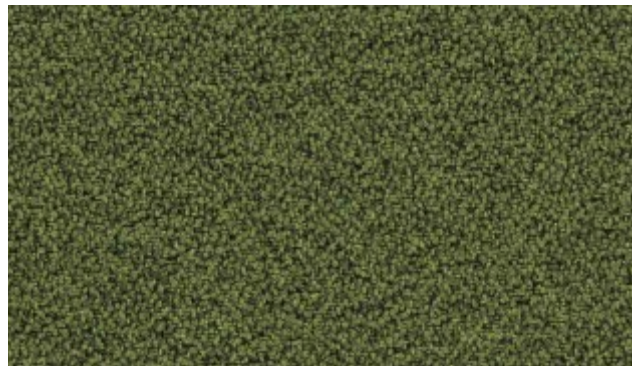
MI17023



MI17024



MI17025



MI17026



Mica

Technische Informationen

Zusammensetzung

97% post-consumer recycled polyester/3% polyester
Gewicht: 2500 hell/2501 dunkel: 370 g/lm. (11.93 oz/lin.yd.)

Scheuerfestigkeit

EN ISO 12947-2 60,000 ASTM D4157 100,000

Feuersicherung

CA TB 117-2013 ASTM E 84 Class 1 BS EN 1021-1 Zigarette BS EN 1021-2 Match BS 476 Part 7 class 1

Bemerkung

Es werden auch weitere Entflammbarkeitsnormen erfüllt. Die flammhemmende Wirkung hängt vom verwendeten Schaumstoff ab. Enthält keine flammhemmenden Chemikalien

Lichtechtheit

5-8 (ISO 105 - B02)

Reibechtheit

Nass: 4-5, Trocken: 4-5 (ISO 105 - X 12)

Reinigung

Waschen oder chemische Reinigung P(W). Mica wird aus Polyester hergestellt, einem Material, das sich für Umgebungen mit besonderen Reinigungsanforderungen eignet. 60°C Schrumpfung max. 2,0%

Verfügbar für

- WINEA SONIC ● WINEA ELEMENTS
- WINEA SINUS ● MAXX STAURAUM Sitzkissen
- WINEA X ● WINEA PLUS
- WINEA TOOLZ

● erhältlich ● nicht erhältlich

Technical Information

Composition

97% post-consumer recycled polyester/3% polyester
Weight: 2500 light/2501 dark: 370 g/lm. (11.93 oz/lin.yd.)

Abrasion Resistance

EN ISO 12947-2 60,000 ASTM D4157 100,000

Flammability

CA TB 117-2013 ASTM E 84 Class 1 BS EN 1021-1 Cigarette BS EN 1021-2 Match BS 476 Part 7 class 1

Note

Will also pass other flammability standards. Flame retardant performance is dependent upon the foam used. Contains no flame retardant chemicals

Light Fastness

5-8 (ISO 105 - B02)

Fastness to Rubbing

Wet: 4-5, Dry: 4-5 (ISO 105 - X 12)

Cleaning

Can be washed or dry cleaned P(W). Mica is made of polyester which is a material suited for environments with special requirements for cleaning. 60°C shrinkage max. 2,0%

Available for

- WINEA SONIC ● WINEA ELEMENTS
- WINEA SINUS ● MAXX STAURAUM cushion
- WINEA X ● WINEA PLUS
- WINEA TOOLZ

● available ● not available



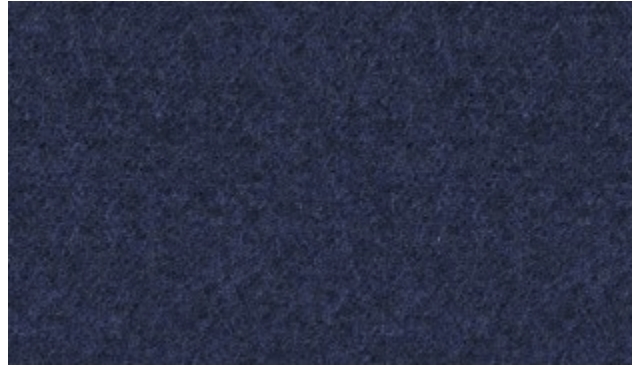
Synergy 170 95% Schurwolle, 5% Polyamide

PG02

WINI  **MEIN BÜRO.**



Affix LDP 32



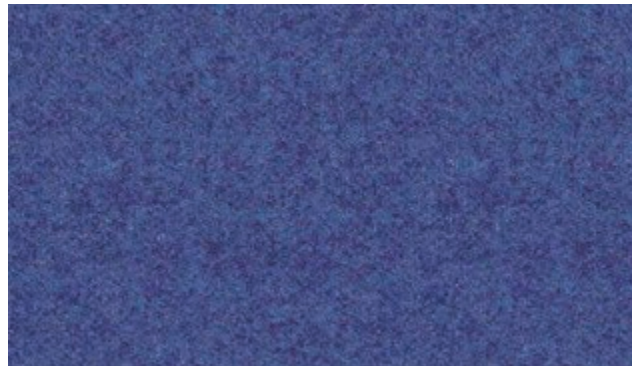
Alike LDP 62



Append LDP 49



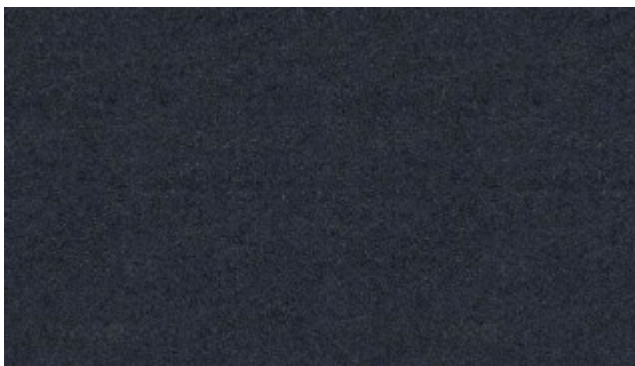
Chemistry LDP 35



Collaborate LDP 68



Combo LDP 77



Compound LDP 25



Fellowship LDP 66



Gather LDP 46



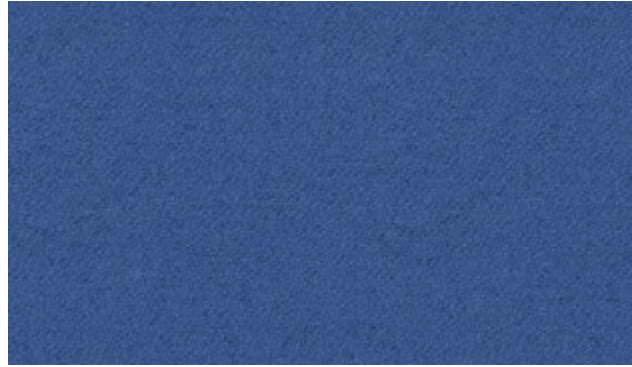
Synergy 170 95% Schurwolle, 5% Polyamide

PG02

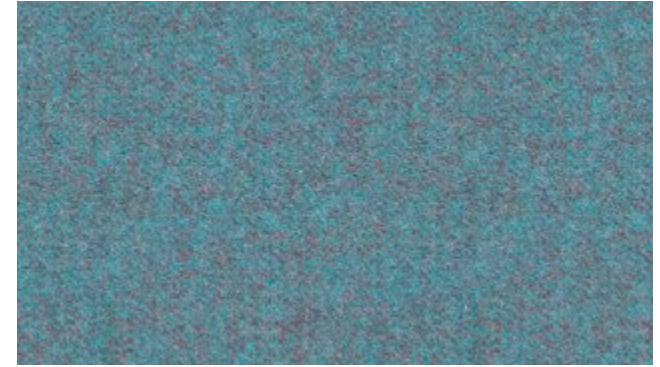
WINI  **MEIN BÜRO.**



Group LDP 59



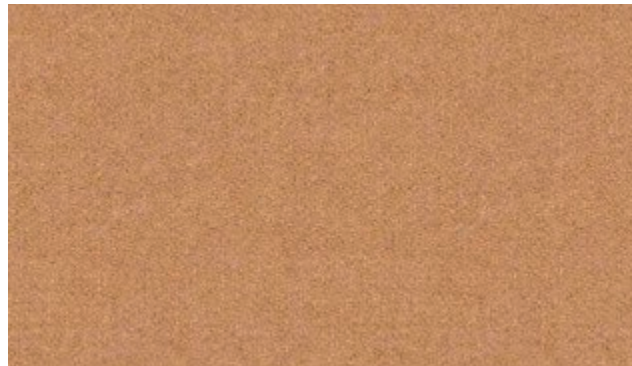
Guild LDP 63



Kinship LDP 56



Level LDP 20



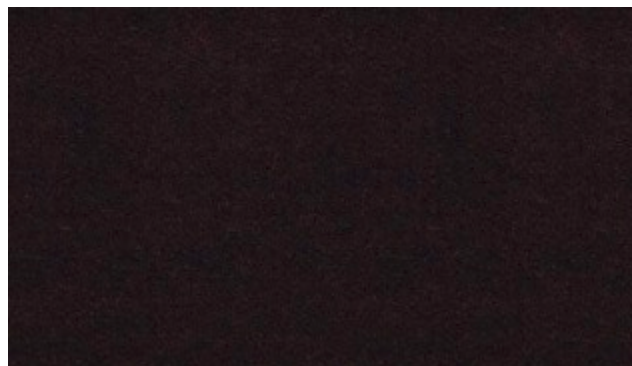
Loop LDP 18



Mutual LDP 84



Pact LDP 53



Process LDP 88



Regard LDP 54



Synergy 170 95% Schurwolle, 5% Polyamide

PG02

WINI  **MEIN BÜRO.**



Serendipity LDP 08



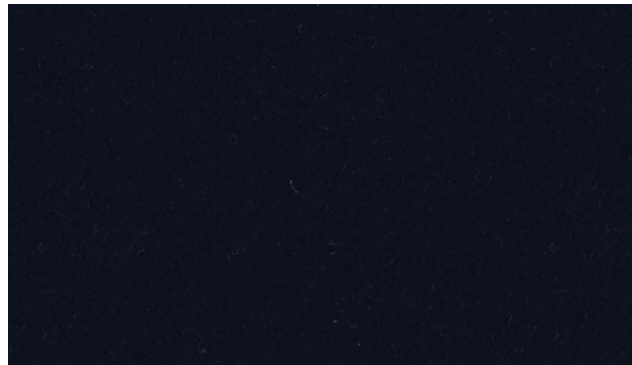
Share LDP 85



Summon LDP 45



Support LDP 55



Sync LDP 69



Work LDP 73



Synergy 170

Technische Informationen

Zusammensetzung

95% Schurwolle, 5% Polyamide
Gewicht: 400g/m² ±5%

Scheuerfestigkeit

Schwerer Objekteinsatz/ 10 Jahre Garantie Extern zertifiziert mit
≥ 100,000 Scheuertouren Martindale.

Feuersicherung

EN 1021 – 1 (Zigarettestest) EN 1021 – 2 (Streichholztest) BS 7176 Low Hazard ÖNORM B 3825 & A 3800-1 (mit 58 kg/m³ CMHR Schaum) UNI 9175 Classe 1IM EN 13501-1 Adhered Class D, s1, d0 EN 13501-1 Unadhered Class E, s2, d0

Bemerkung

Schwerentflammbarkeit hängt von den verwendeten Komponenten ab.

Lichtechtheit

5 (ISO 105 – B02)

Reibecktheit

Nass: 4, Trocken: 4 (ISO 105 – X 12)

Reinigung

Regelmäßig absaugen. Professionelle Trockenreinigung. Alternativ dazu mit einem feuchten Tuch abwischen.

Verfügbar für

- WINEA SONIC ● WINEA ELEMENTS
- WINEA SINUS ● MAXX STAURAUM Sitzkissen
- WINEA X ● WINEA PLUS
- WINEA TOOLZ

● erhältlich ● nicht erhältlich

Technical Information

Composition

95% Pure New Wool, 5% polyamid
Weight: 400g/m² ±5%

Abrasion Resistance

Heavy duty / 10 year Guarantee independently certified to
≥ 100,000 Martindale cycles.

Flammability

EN 1021 – 1 (cigarette) EN 1021 – 2 (match) BS 7176 Low Hazard ÖNORM B3825& A 3800-1 (over 58 kg/m³ CMHR foam), UNI 9175 Classe 1 IM EN 13501-1 Adhered Class D,s1, d0 EN 13501-1 Unadhered Class E, s2, d0

Note

Flammability performance is dependent on components used.

Light Fastness

5 (ISO 105 – B02)

Fastness to Rubbing

Wet: 4, Dry: 4 (ISO 105 – X 12)

Cleaning

Vacuum regularly. Professionally dry clean or wipe clean with a damp cloth.

Available for

- WINEA SONIC ● WINEA ELEMENTS
- WINEA SINUS ● MAXX STAURAUM cushion
- WINEA X ● WINEA PLUS
- WINEA TOOLZ

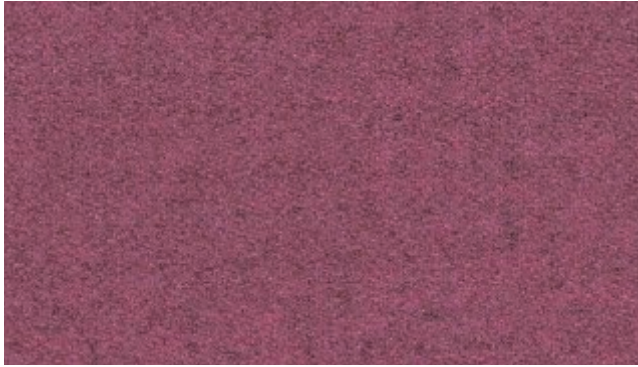
● available ● not available



Blazer Lite 100% Schurwolle

PG02

WINI  **MEIN BÜRO.**



Angel LTH 49



Aspire LTH 52



Balance LTH 41



Bliss LTH 48



Buddha LTH 56



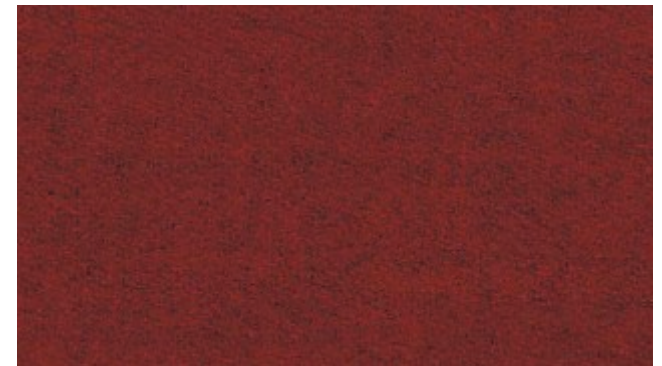
Cuddle LTH 62



Dainty LTH 64



Daydream LTH 46



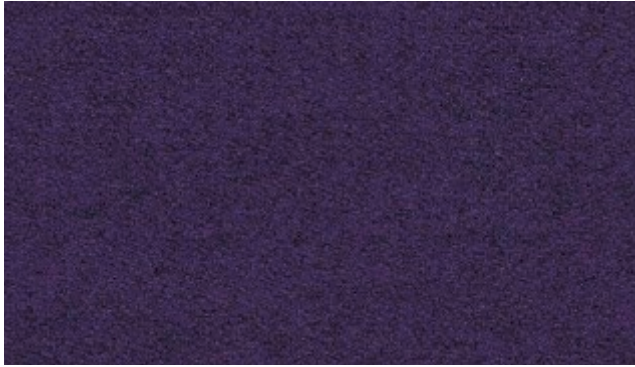
Devotet LTH 58



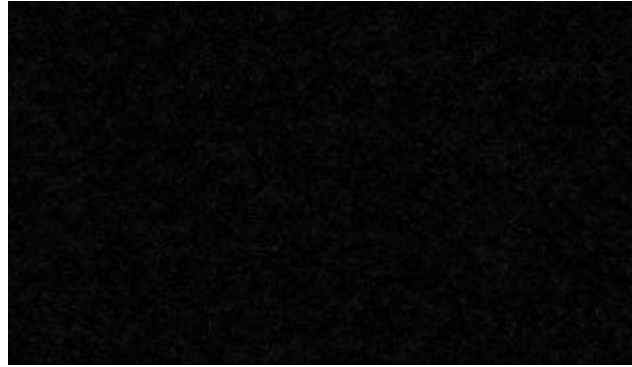
Blazer Lite 100% Schurwolle

PG02

WINI  **MEIN BÜRO.**



Faith LTH 68



Freedom LTH 69



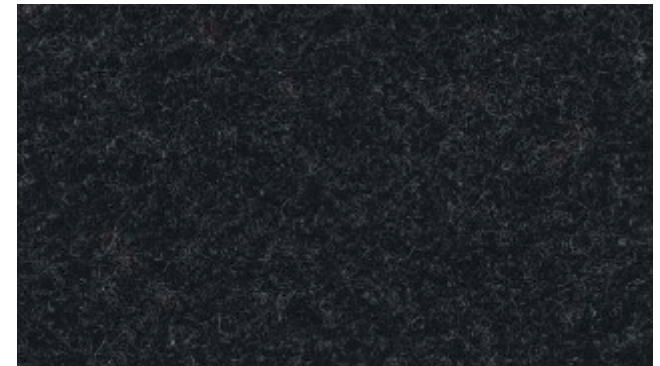
Graceful LTH 51



Happy LTH 55



Harmony LTH 63



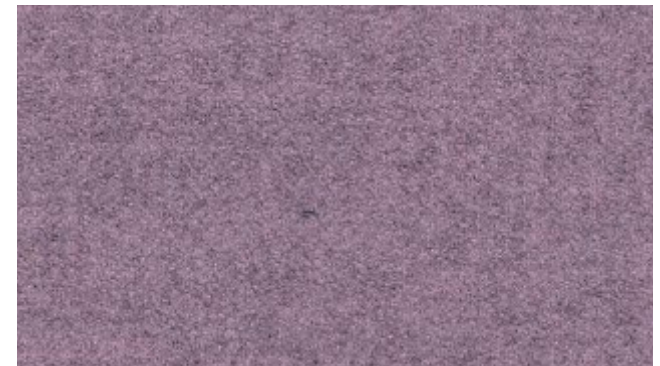
Haven LTH 40



Hope LTH 50



Hush LTH 42



Love LTH 47



Blazer Lite 100% Schurwolle

PG02

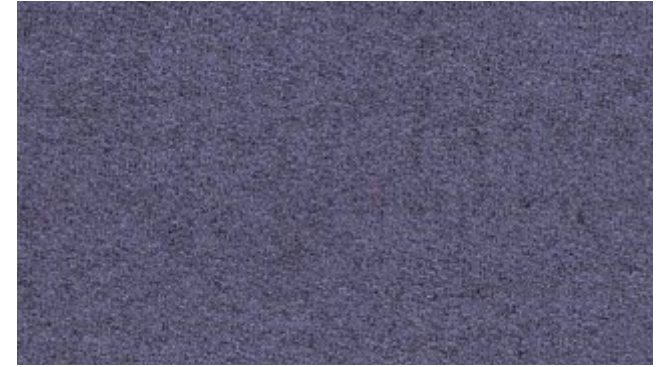
WINI  **MEIN BÜRO.**



Mood LTH 44



Pamper LTH 66



Pastel LTH 65



Pillow LTH 43



Praise LTH 54



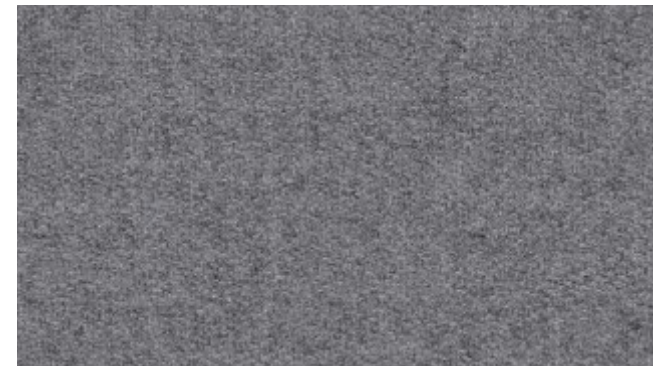
Retreat LTH 39



Shelter LTH 60



Tender LTH 53



True LTH 61



Blazer Lite 100% Schurwolle

PG02

WINI  **MEIN BÜRO.**



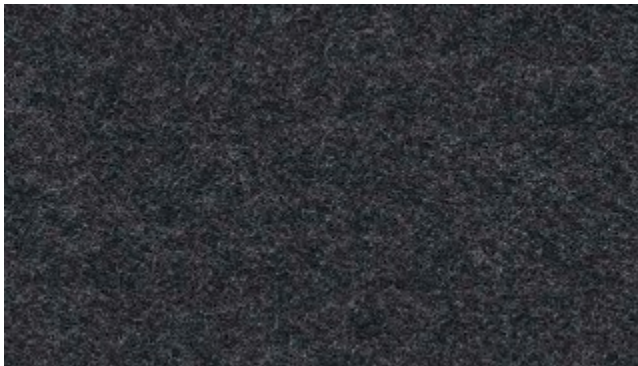
Verity LTH 57



Wish LTH 67



Worship LTH 59



Solace LTH 70



Blazer Lite

WINI  MEIN BÜRO.

Technische Informationen

Zusammensetzung

100% Schurwolle, nicht Schwermetallhaltige Farbstoffe

Gewicht: 355 g/m² ± 5%

Feuersicherung

BS 476 Part 7 Class 1, BS 476 Part 6 Class 0 EN 13501-1 Adhered Class C, s1, d0

Bemerkung

Schwerentflammbarkeit hängt von den verwendeten Komponenten ab.

Lichtechtheit

5 (ISO 105 - B02)

Reibechtheit

Nass: 4, Trocken: 4 (ISO 105 - X 12)

Reinigung

Regelmäßig absaugen. Professionelle Trockenreinigung. Alternativ dazu mit einem feuchten Tuch abwischen.

Verfügbar für

- WINEA SONIC
- WINEA SINUS
- WINEA X
- WINEA TOOLZ
- WINEA ELEMENTS
- MAXX STAURAUM Sitzkissen
- WINEA PLUS

● erhältlich ● nicht erhältlich

Technical Information

Composition

100% Pure New Wool non metallic dyestuffs

Weight: 355 g/m² ± 5%

Flammability

BS 476 Part 7 Class 1, BS 476 Part 6 Class 0 EN 13501-1 Adhered Class C, s1, d0

Note

Flammability performance is dependent on components used.

Light Fastness

5 (ISO 105 - B02)

Fastness to Rubbing

Wet: 4, Dry: 4 (ISO 105 - X 12)

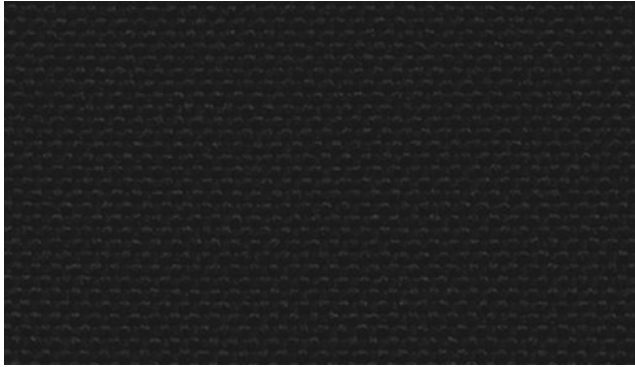
Cleaning

Vacuum regularly. Professionally dry clean or wipe clean with a damp cloth.

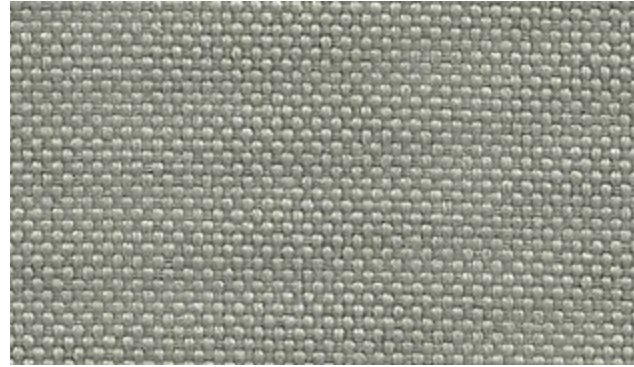
Available for

- WINEA SONIC
- WINEA SINUS
- WINEA X
- WINEA TOOLZ
- WINEA ELEMENTS
- MAXX STAURAUM cushion
- WINEA PLUS

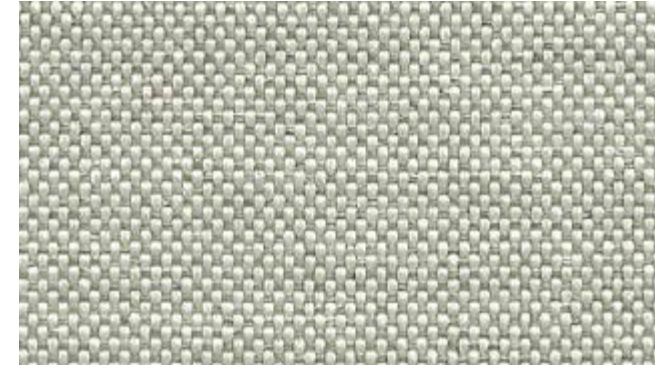
● available ● not available



Depth QUE01



Fossil QUE02



Barnacle QUE03



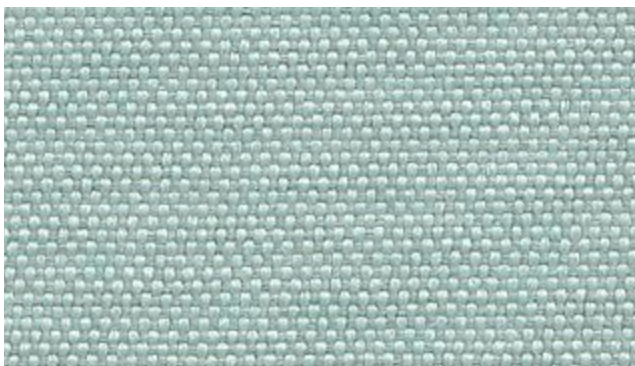
Mussel QUE04



Quartz QUE05



Shell QUE06



Ripple QUE07



Whelk QUE08



Limpet QUE09



Quest 100% recyceltes post-consumer Polyester mit 75% SEAQUAL® GARN

PG02

WINI  MEIN BÜRO.



Rock Pool QUE10



Wave QUE11



Tide QUE12



Sea Grass QUE13



Algae QUE14



Kelp QUE15



Sea Foam QUE16



Urchin QUE17



Abalone QUE18



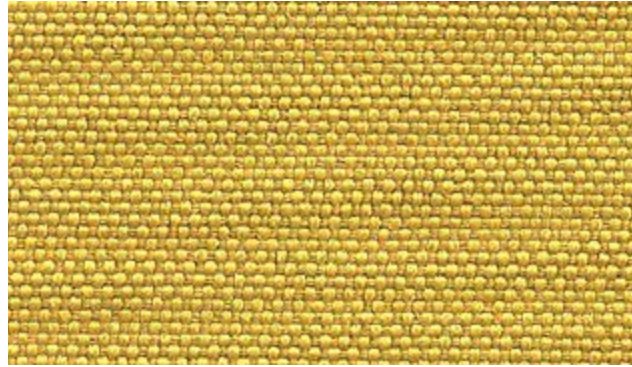
Quest 100% recyceltes post-consumer Polyester mit 75% SEAQUAL® GARN

PG02

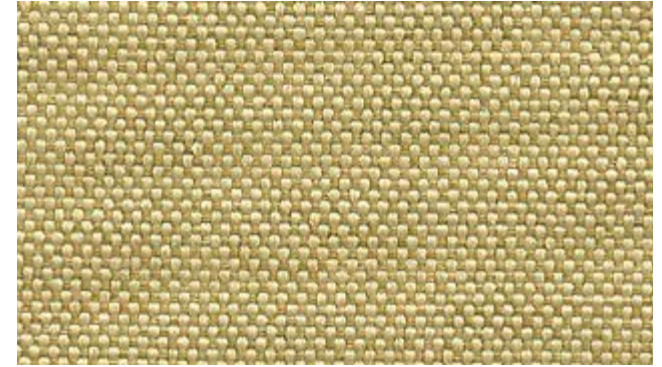
WINI MEIN BÜRO.



Driftwood QUE19



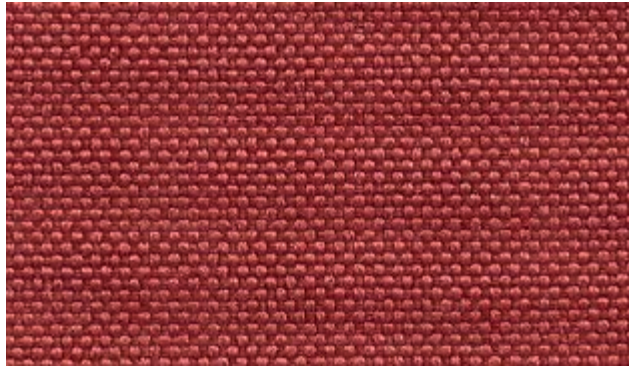
Sandstone QUE20



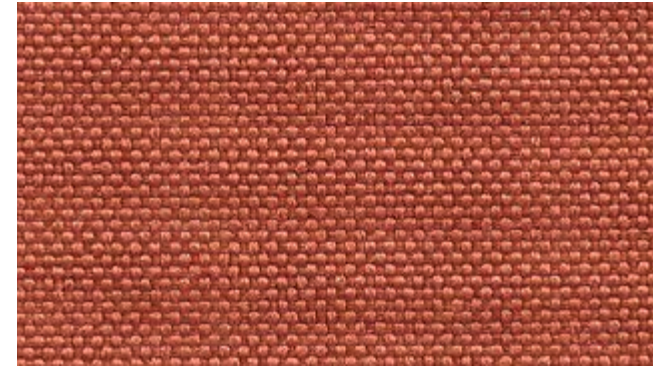
Beach Comber QUE21



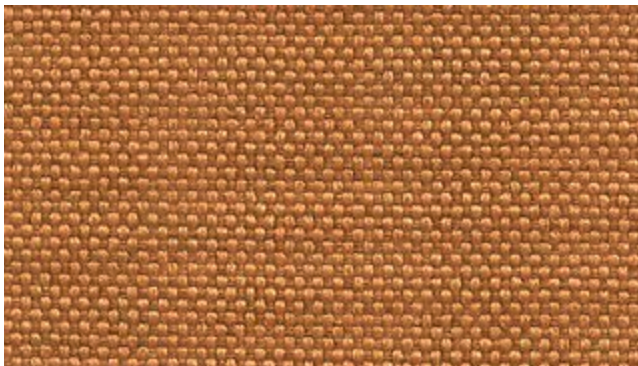
Salt QUE22



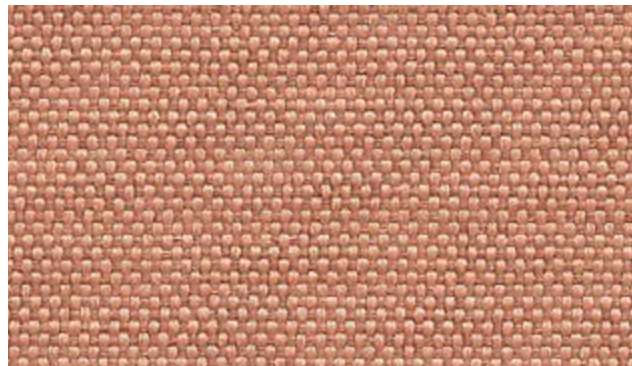
Cockle QUE23



Crab QUE24



Clay QUE25



Shrimp QUE26



Pebble QUE27



Quest

Technische Informationen

Zusammensetzung

100% recyceltes post-consumer Polyester, enthält 75% SEAQUAL® GARN
Gewicht: 330g/m² ±5% (452g/lin.m ±5%)

Scheuerfestigkeit

Schwerer Objekteinsatz/ 10 Jahre Garantie Extern zertifiziert mit
≥ 100,000 Scheuertouren Martindale.

Feuersicherung

EN 1021 - 1 (Zigarettest) EN 1021 - 2 (Streichholztest) BS 7176 Low Hazard UNI 9175 Classe 1 IM BS 476 Part 7 Class 1Y (Adhered) EN 13501-1 Adhered Class B, s1, d0 EN 13501-1 Un-adhered Class B, s1, d0 BS 5852 Ignition Source 5 mit EnviroFlam5 BS 7176 Medium Hazard mit EnviroFlam5 IMO FTP Code (Part 8) mit EnviroFlam5

Lichtechtheit

4-6 (ISO 105 - B02)

Reibecktheit

Nass: 4, Trocken: 4 (ISO 105 - X 12)

Reinigung

Regelmäßig absaugen. Mit einem feuchten Tuch abwischen oder mit einem geeigneten Polstershampoo behandeln. Für eine Grundreinigung bitte Dampf, Chlorbleiche, Alkohol oder professionelle Trockenreinigung verwenden. Kann bei 60°C gewaschen werden.

Verfügbar für

- WINEA SONIC
- WINEA SINUS
- WINEA X
- WINEA TOOLZ
- WINEA ELEMENTS
- MAXX STAURAUM Sitzkissen
- WINEA PLUS

● erhältlich ● nicht erhältlich

Technical Information

Composition

100% recycled s post-consumer polyester, contains 75% SEAQUAL® GARN
Weight: 330g/m² ±5% (452g/lin.m ±5%)

Abrasion Resistance

Heavy duty / 10 year Guaranntee independently certified to
≥ 100,000 Martindale cycles.

Flammability

EN 1021 - 1 (cigarette) EN 1021 - 2 (match) BS 7176 Low Hazard UNI 9175 Classe 1 IM BS 476 Part 7 Class 1Y (Adhered) EN 13501-1 Adhered Class B, s1, d0 EN 13501-1 Un-adhered Class B, s1, d0 BS 5852 Ignition Source 5 mit EnviroFlam5 BS 7176 Medium Hazard mit EnviroFlam5 IMO FTP Code (Part 8) mit EnviroFlam5

Light Fastness

4-6 (ISO 105 - B02)

Fastness to Rubbing

Wet: 4, Dry: 4 (ISO 105 - X 12)

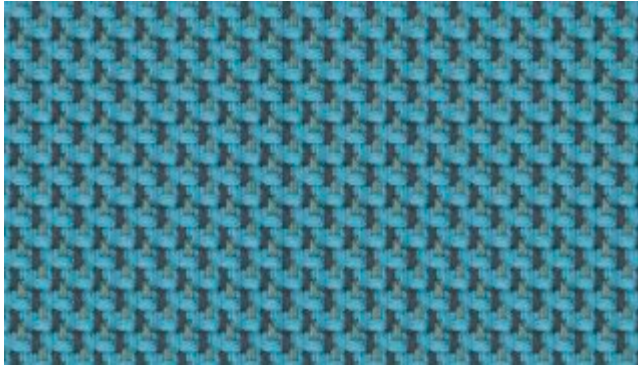
Cleaning

Vacuum regularly. Wipe with a damp cloth or treat with a suitable upholstery shampoo. For basic cleaning, please use steam, chlorine bleach, alcohol or professional dry cleaning. Can be washed at 60°C.

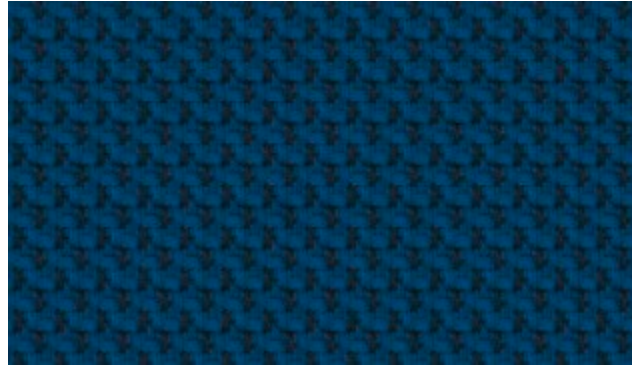
Available for

- WINEA SONIC
- WINEA SINUS
- WINEA X
- WINEA TOOLZ
- WINEA ELEMENTS
- MAXX STAURAUM cushion
- WINEA PLUS

● available ● not available



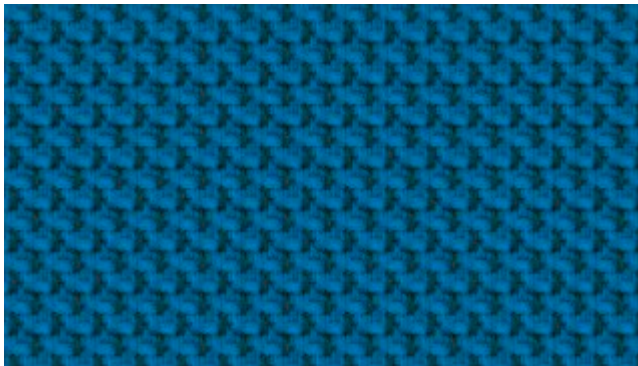
Flex REP01



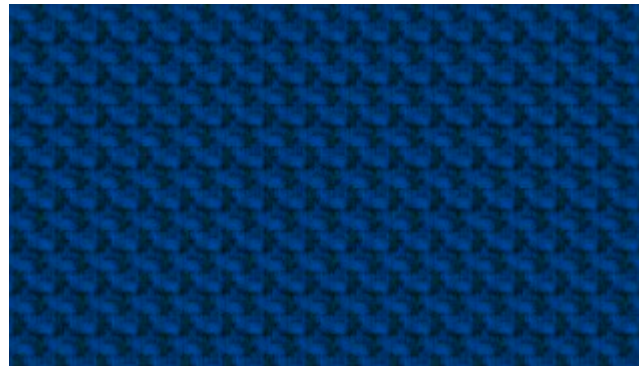
Agile REP02



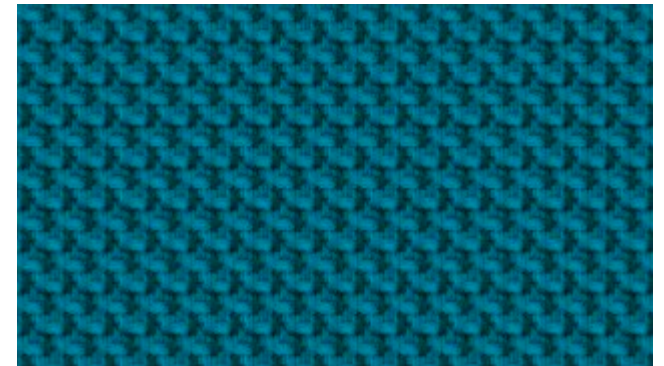
Athletic REP03



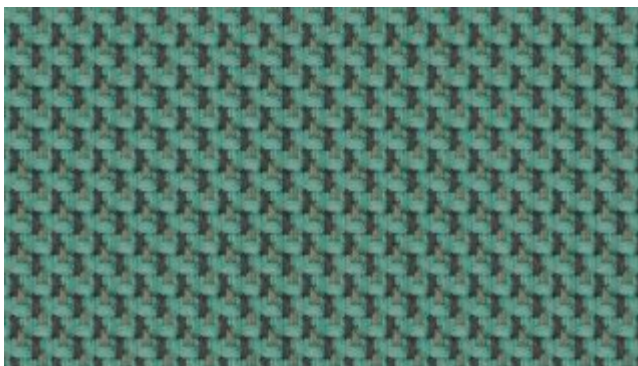
Run REP04



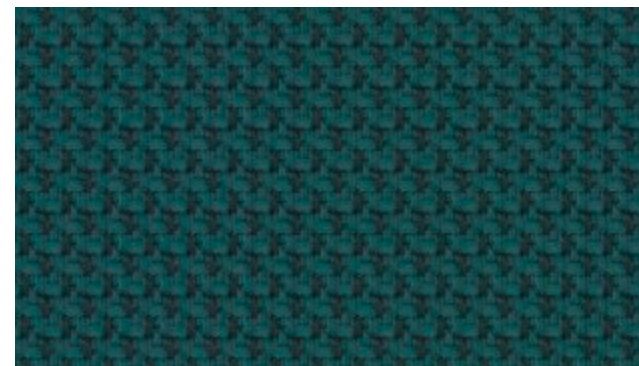
Jog REP05



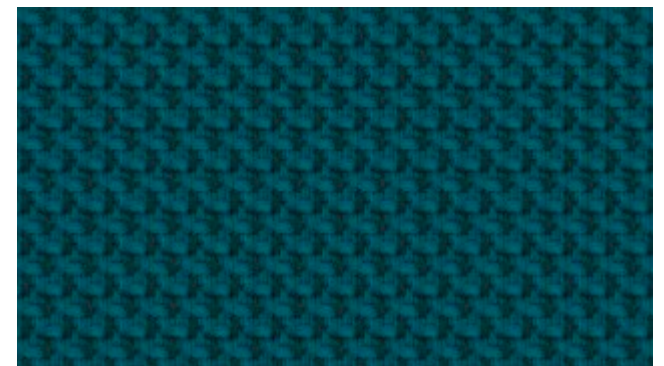
Flip REP06



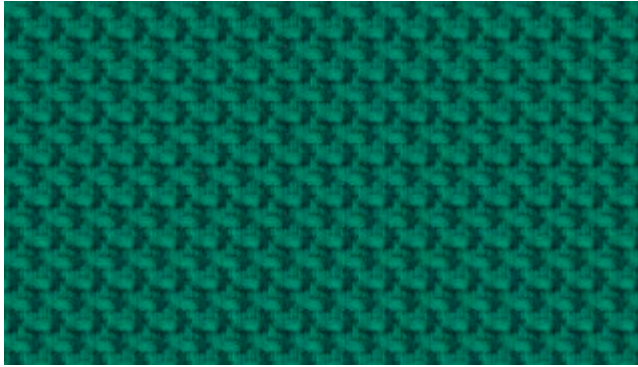
Joy REP07



Cheer REP08



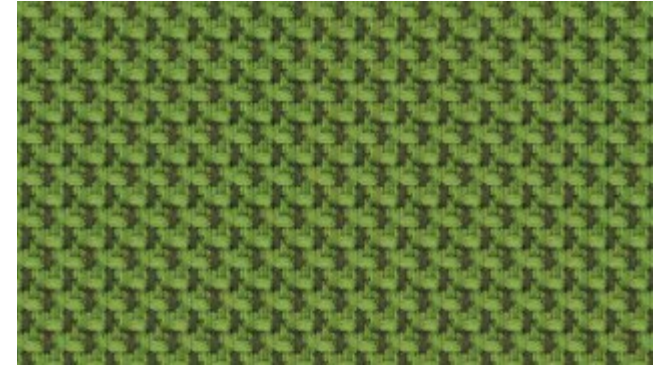
Handstand REP09



Step REP10



Freestyle REP11



Motion REP12



Skip REP13



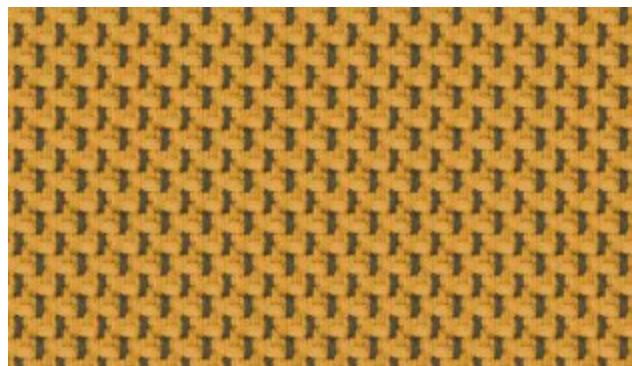
Hop REP14



Pull REP15



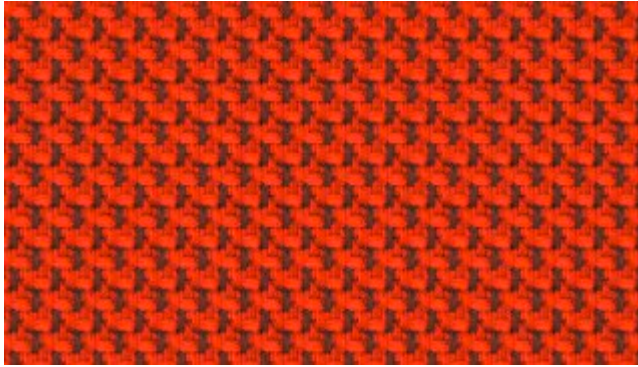
Push REP16



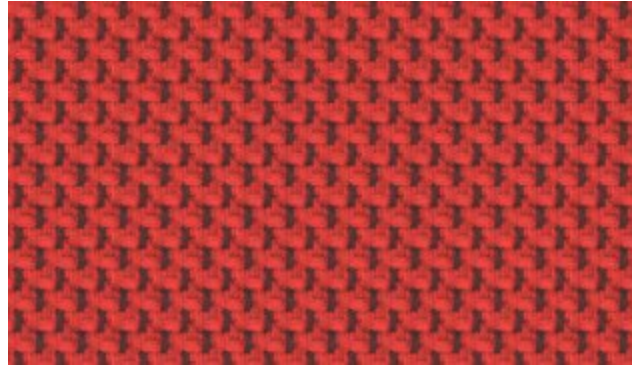
Lift REP17



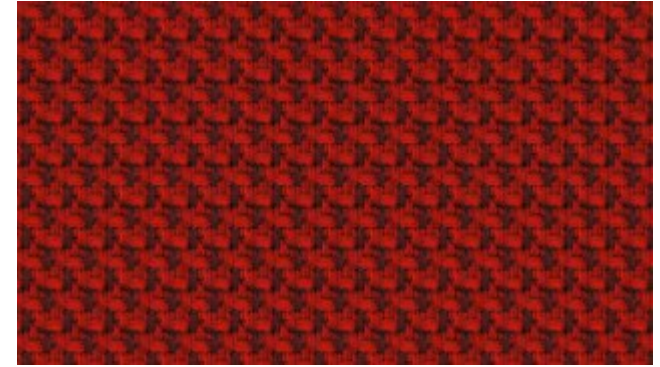
Roll REP18



Fun REP19



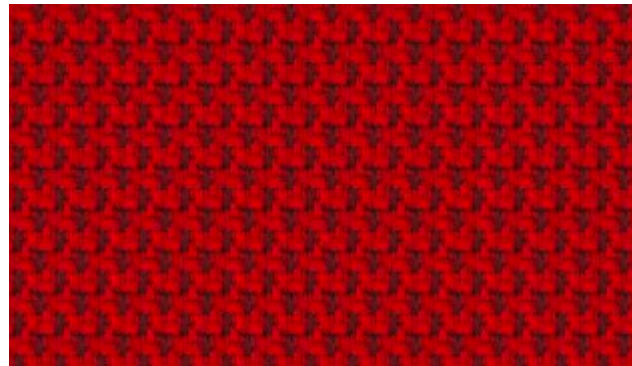
Play REP20



Move REP21



Game REP22



Active REP23



Workout REP24



Jump REP25



Bounce REP26



Sport REP27



Catapult REP28



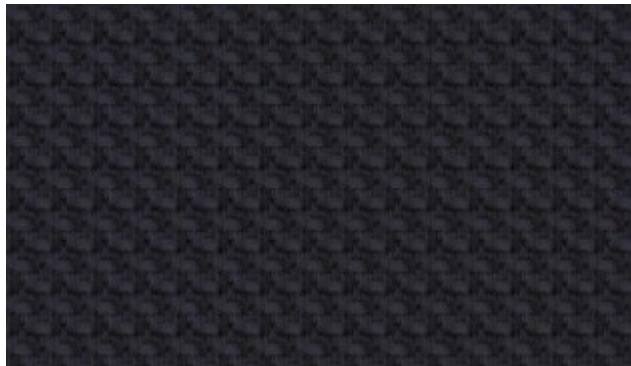
Twirl REP29



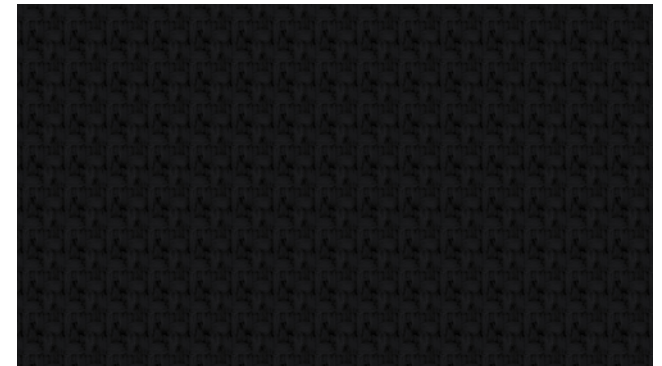
Dance REP30



Throw REP31



Swing REP32



Climb REP33



Technische Informationen

Zusammensetzung

100% post-consumer recyceltes, schwerentflammbares Polyester
Gewicht: 380g/m² ±5%

Scheuerfestigkeit

Schwerer Objekteinsatz/ 10 Jahre Garantie Extern zertifiziert mit
≥ 100,000 Scheuertouren Martindale.

Feuersicherung

EN 1021 - 1&2 (Zigarettentest & Streichholztest) BS 7176 Low Hazard BS
5852 Ignition Source 5 BS 7176 Medium Hazard DIN 4102 B1 NF D 60-013
ÖNORM B 3825 & A 3800-1 (over CMHR 58kg/m³ Foam) UNI 9175 Classe
1 IM EN 13501-1 Adhered Class B, s1, d0 EN 13501-1 Un-adhered Class B,
s1, d0 NF P 92-507 M1

Lichtechtheit

4-6 (ISO 105 - B02)

Reibecktheit

Nass: 4, Trocken: 4 (ISO 105 - X 12)

Reinigung

Regelmäßig absaugen. Mit einem feuchten Tuch abwischen oder mit
einem geeigneten Polstershampoo behandeln. Für eine Grundreinigung bitte
Dampf, Chlorbleiche, Alkohol oder professionelle Trockenreinigung
verwenden. Kann bei 60°C gewaschen werden.

Verfügbar für

- WINEA SONIC ● WINEA ELEMENTS
- WINEA SINUS ● MAXX STAURAUM Sitzkissen
- WINEA X ● WINEA PLUS
- WINEA TOOLZ

● erhältlich ● nicht erhältlich

Technical Information

Composition

100% post-consumer recycled, flame-retardant polyester
Weight: 380g/m² ±5%

Abrasion Resistance

Heavy duty / 10 year guarantee independently certified to
≥ 100,000 Martindale cycles.

Flammability

EN 1021 - 1&2 (Cigarette & Matchtest) BS 7176 Low Hazard BS 5852 Ignition
Source 5 BS 7176 Medium Hazard DIN 4102 B1 NF D 60-013 ÖNORM B 3825
& A 3800-1 (over CMHR 58kg/m³ Foam) UNI 9175 Classe 1 IM EN 13501-1
Adhered Class B, s1, d0 EN 13501-1 Un-adhered Class B, s1, d0 NF P 92-507
M1

Light Fastness

4-6 (ISO 105 - B02)

Fastness to Rubbing

Wet: 4, Dry: 4 (ISO 105 - X 12)

Cleaning

Vacuum regularly. Wipe with a damp cloth or treat with a suitable upholstery
shampoo. For a thorough cleaning please use steam, chlorine bleach, alcohol
or professional dry cleaning. Can be washed at 60°C.

Available for

- WINEA SONIC ● WINEA ELEMENTS
- WINEA SINUS ● MAXX STAURAUM cushion
- WINEA X ● WINEA PLUS
- WINEA TOOLZ

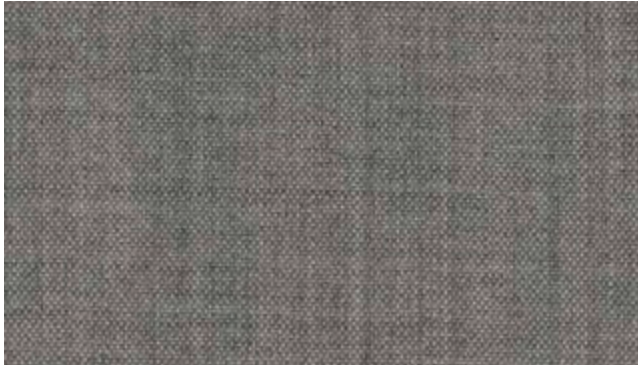
● available ● not available



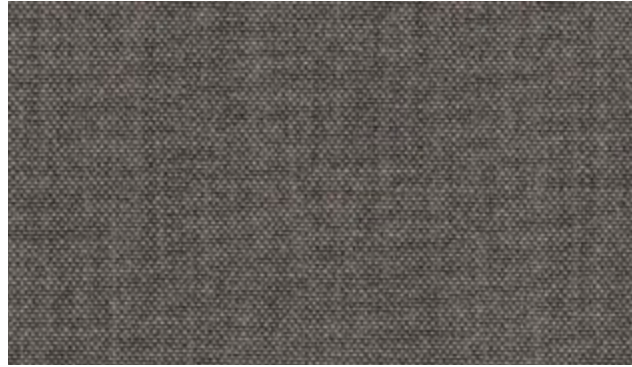
Remix Screen 90% Schurwolle 10% Nylon

PG02

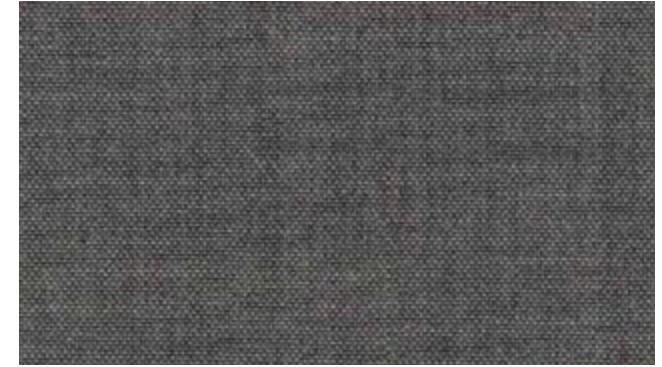
WINI MEIN BÜRO.



RSC128



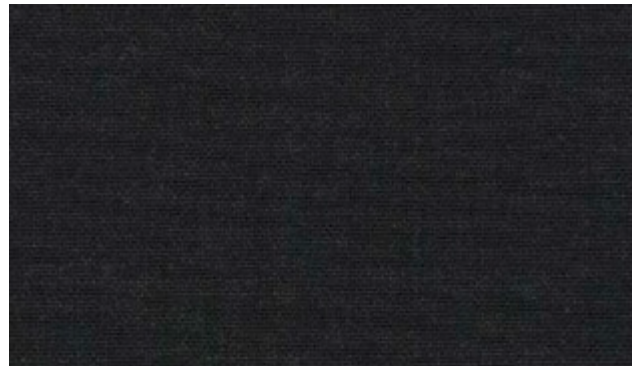
RSC138



RSC148



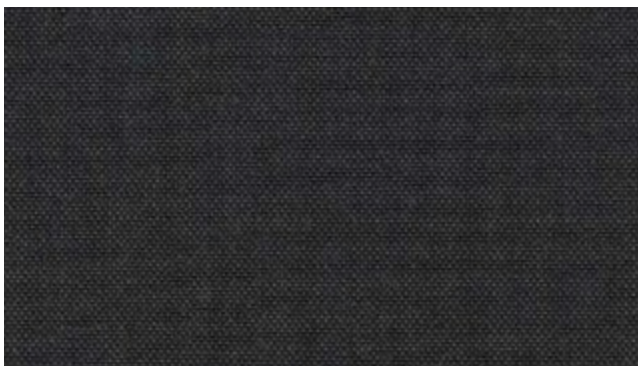
RSC158



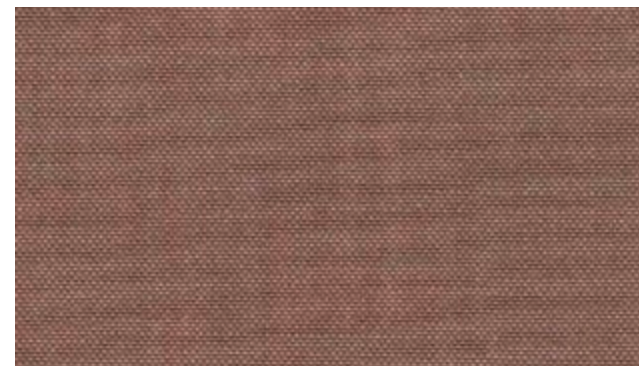
RSC188



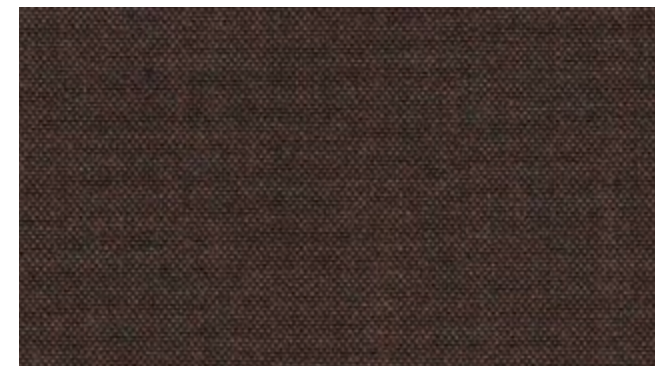
RSC228



RSC288



RSC328



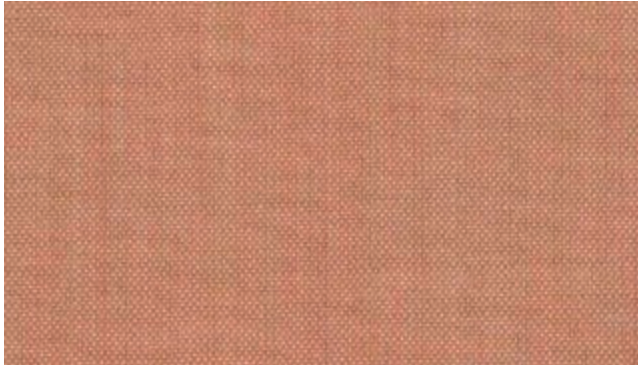
RSC358



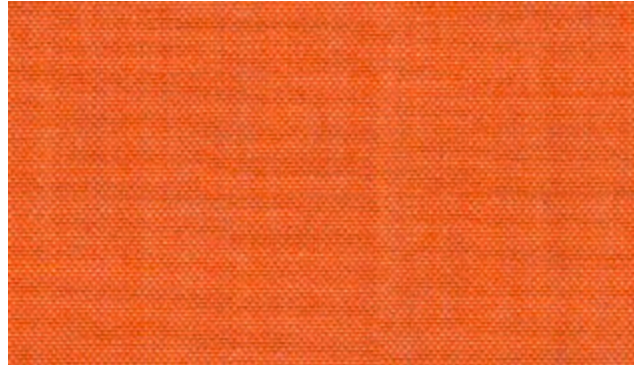
Remix Screen 90% Schurwolle 10% Nylon

PG02

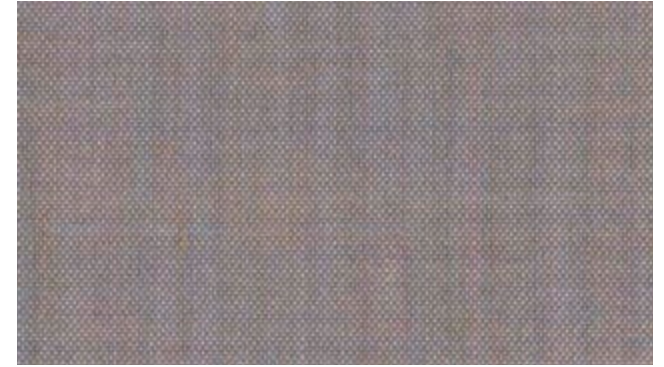
WINI  **MEIN BÜRO.**



RSC408



RSC528



RSC608



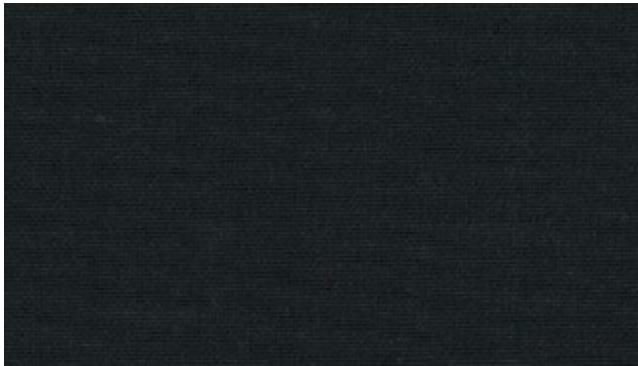
RSC688



RSC818



RSC908



RSC998



Remix Screen

Technische Informationen

Zusammensetzung

90% Schurwolle, 10% Nylon
Gewicht: 450 g/lfd.m.

Scheuerfestigkeit

Pilling Class (EN ISO) 4

Feuersicherung

AS/NZS 1530.3 AS/NZS 3837 class 2 ASTM E84 Class A Adhered ASTM E84 Class A Unadhered BS 476 part 7 + 6 adhered BS 5852 part 1 ignition source 0 DIN 4102 B1 adhered US Cal. Bull. 117-2013

Bemerkung

Schwerentflammbarkeit hängt von verwendeten Komponenten ab

Lichtechtheit

5-7 (ISO 105 - B02)

Reibechtheit

Nass: 4-5, Trocken: 4-5 (ISO 105 - X 12)

Reinigung

Flecken mit sauberem warmem Wasser oder Sprudelwasser entfernen. Die Extraktionsreinigung kann Klebstoffe auf Wasserbasis auflösen. Achten Sie deshalb auf Temperatur und Menge der Reinigungsflüssigkeit.

Verfügbar für

- WINEA SONIC
- WINEA SINUS
- WINEA X
- WINEA TOOLZ
- WINEA ELEMENTS
- MAXX STAURAUM Sitzkissen
- WINEA PLUS

● erhältlich ● nicht erhältlich

Technical Information

Composition

95% Pure New Wool 10% nylon
Weight: 450 g/lfd.m.

Abrasion Resistance

Pilling Class (EN ISO) 4.

Flammability

AS/NZS 1530.3 AS/NZS 3837 class 2 ASTM E84 Class A Adhered ASTM E84 Class A Unadhered BS 476 part 7 + 6 adhered BS 5852 part 1 ignition source 0 DIN 4102 B1 adhered US Cal. Bull. 117-2013

Note

Flammability performance is dependent on components use

Light Fastness

5-7 (ISO 105 - B02)

Fastness to Rubbing

Wet: 4-5, Dry: 4-5 (ISO 105 - X 12)

Cleaning

Vacuum regularly. Remove stains with clean warm water or sparkling water. Extraction cleaning may dissolve water-based glues. Please pay particular attention to the amount and temperature of the cleaning fluid.

Available for

- WINEA SONIC
- WINEA SINUS
- WINEA X
- WINEA TOOLZ
- WINEA ELEMENTS
- MAXX STAURAUM cushion
- WINEA PLUS

● available ● not available



Polyestervlies

WINI MEIN BÜRO.



Anthrazit (9mm) F2



Silbergrau (9mm) F3



Rot (9mm) F4



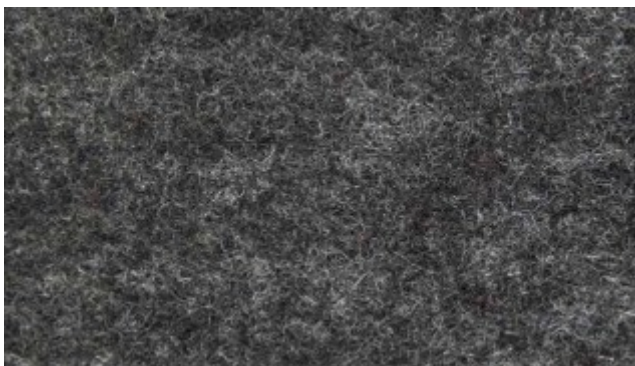
Lichtgrau (3mm) F5



Hellgrau (10mm/25mm) F6



Anthrazit (10mm/ 25mm) F8



Filzeinlage - Wange
Anthrazit DA



Filzeinlage - Wange
Grau-Meliert GU



Polyestervlies

Technische Informationen

Zusammensetzung

60% recyceltes Material, 40% neues PET

Feuersicherung

Schwer entflammbar nach DIN EN13501 B-s1,d0

Lichtechtheit

DIN EN ISO 105-B02, Note > 6

Reinigung

Nicht fetthaltige Flecken lassen sich in der Regel schon mit einem in lauwarmen Wasser ausgedrückten, fusselfreien Tuch vorsichtig abtupfen. Obst oder Rotweinflecken werden am besten mit Salz behandelt. Fett- oder ölhaltige Flecken sollten mit entsprechenden Reinigungs- oder Lösungsmitteln entfernt werden. Ölige Reinigungsmittel dürfen nicht verwendet werden.

Verfügbar für

 WINEA FLEX UP

 erhältlich  nicht erhältlich

Technical Information

Composition

60% post-consumer material, 40% new PET

Flammability

Flame retardant acc. to DIN EN13501 B-s1,d0

Light Fastness

DIN EN ISO 105-B02, Note > 6

Cleaning

Non-greasy stains can usually be carefully dabbed off with a lint-free cloth squeezed out in lukewarm water.

Fruit or red wine stains are best treated with salt. Greasy or oily stains should be removed with appropriate cleaning agents or solvents. Oleagenous cleaning agents must not be used.

Available for

 WINEA FLEX UP

 available  not available

100und
Über 100 Jahre WINI

WINI Büromöbel
Georg Schmidt GmbH & Co. KG

Auhagenstraße 79
31863 Coppensbrügge, OT Marienau
Germany

Telefon: +49(0)5156/979-0
Telefax: +49(0)5156/979-100

E-Mail: info@wini.de
Internet: www.wini.de

Folgt uns auf

